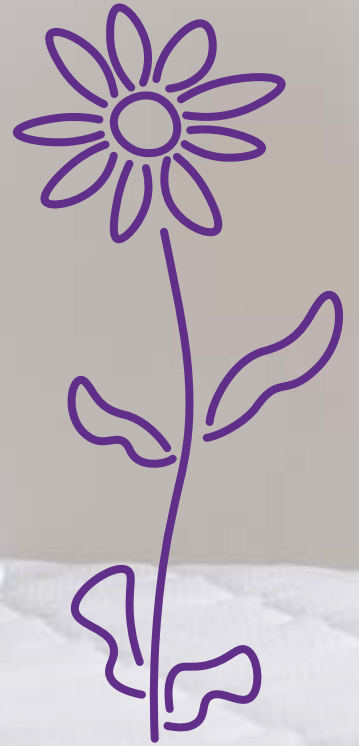




Träumeland

die matratze die atmet · the breathing mattress



SLEEP, BABY SLEEP

THE TRÄUMELAND
BABY & CHILDREN'S MAGAZINE
2024

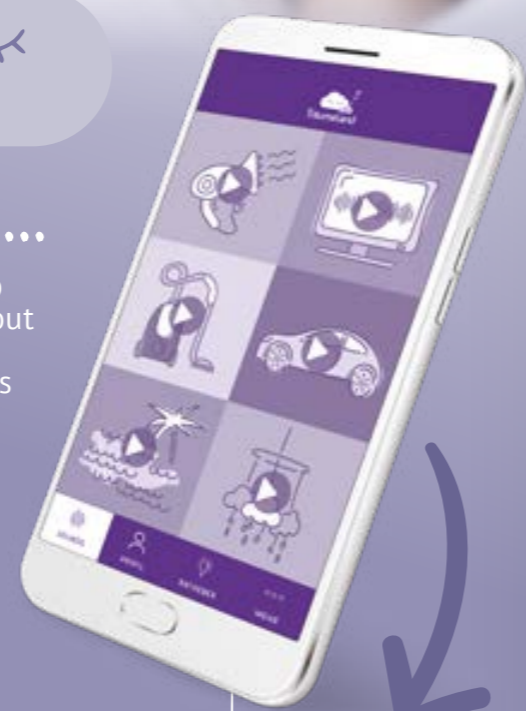


CLIMATE NEUTRAL
COMPANY
certified by Fokus Zukunft



**MADE IN
AUSTRIA**

GOODBYE
SLEEPLESS
NIGHTS!



DID YOU KNOW THAT ...

... monotone sounds like "white noise" can help babies fall asleep? According to one study, 16 out of 20 babies fall asleep within 5 minutes when listening to "white noise". Without sound, it was only 5. Even the sound of a hair dryer and the gentle sound of the sea can work wonders

ADVANTAGES AT A GLANCE



many different sounds



easy to play



timer function to control the playback time



endless loop for uncomplicated playback



can be played in flight mode



always at hand on your smartphone (whether at home, out for a walk, on holiday or with the grandparents, ...)



including valuable tips on the subject of baby sleep



without annoying advertising

APP DOWNLOAD
NOW



Scan the QR code or search for "Träumeland" in the app store

OUR TRÄUMELAND



WE DEVELOP AND MANUFACTURE PRODUCTS AS IF THEY WERE INTENDED FOR OUR OWN CHILDREN.

For parents, the most wonderful joy of all is to watch their baby when it is sleeping. Safe and protected. We have known this feeling - and our responsibilities - for over 50 years now.

Babies can change the world and businesses.

We have been a certified climate-neutral company since the end of 2020. For our children to be able to sleep well they need not only a warm and healthy bed, but also a future. And, because we enjoy the trust of so many mothers and fathers, all our products are manufactured to the best of our knowledge and belief.

A good night's sleep is, after all, important for children as well as parents. For this reason, our high-quality products guarantee your baby not only a peaceful night's rest but also a healthy sleeping position. Developed and manufactured with the utmost care to ensure that your child enjoys sweet dreams every night.



Gabi + Hannes Nösslböck

*Over 1.5 million mattresses sold



OVERVIEW OF OUR PRODUCTS

GENERAL INFORMATION

- 06 OUR TRÄUMELAND**
Made in Austria, mattress quality points, tested quality

MATTRESSES & ACCESSORIES

- 12 SMALL MATTRESSES**
for cradles, bassinets, co-sleepers
- 16 COT MATTRESSES**
for cots in the sizes 60 x 120 cm | 70 x 140 cm
- 26 SUSTAINABILITY**
- 34 KIDS' AND YOUTH MATTRESSES**
for beds starting at a size of 80 x 160 cm
- 40 SLATTED BED FRAME**
- 41 PLAYPEN MATTRESSES**
- 42 TRAVEL COT MATTRESSES**
- 43 WETNESS PROTECTION COVERS & MATTRESS PROTECTORS**

HOME NEST

- 44 „HOME“ NEST WITH INTEGRATED MATTRESS FOR BABIES**

SLEEPING BAGS

- 46 LIEBMICH SLEEPING BAG**
- 54 SUMMER SLEEPING BAG**
TENCEL™, cotton, cotton muslin
- 57 SLEEPING BAGS CERTIFIED ACCORDING TO GOTS STANDARD**
- 58 SWADDLING SLEEPING BAG „AIR“**
- 59 ALL YEAR SLEEP OVERALL TO GO**
- 60 SLEEP OVERALL LIGHT TO GO**

TRÄUMELAND-CARE

- 62 PILLOWS FOR PROMOTION OF HEALTHY MOTOR SKILLS DEVELOPMENT**
- 67 SIDE-POSITIONING CUSHIONS**

DUVETS & CUSHIONS

- 68 DUVETS & CUSHIONS**
- 72 CHILDREN'S PILLOW**
For special support of the cervical spine.

TEXTILES

- 76 BEDDING**
- 81 BABY BLANKET & CUDDLY CUSHION**
- 82 NURSING CUSHIONS**
- 84 SNAKE PILLOW**
- 85 CHANGING PADS & CHANGING WEGDES**
- 88 FITTED SHEETS**
- 90 ALL MATERIALS AT A GLANCE**

MADE IN
AUSTRIA



THE BREATHING MATTRESS MADE IN AUSTRIA

We want only the best for your baby, so we insist on premium quality and stringently tested materials. It is particularly important to us, that our mattresses can “breathe”, so we focus our full attention, when developing new products, on ventilation systems and preventing heat accumulation.



VENTILATION IN THE MATTRESS CORE

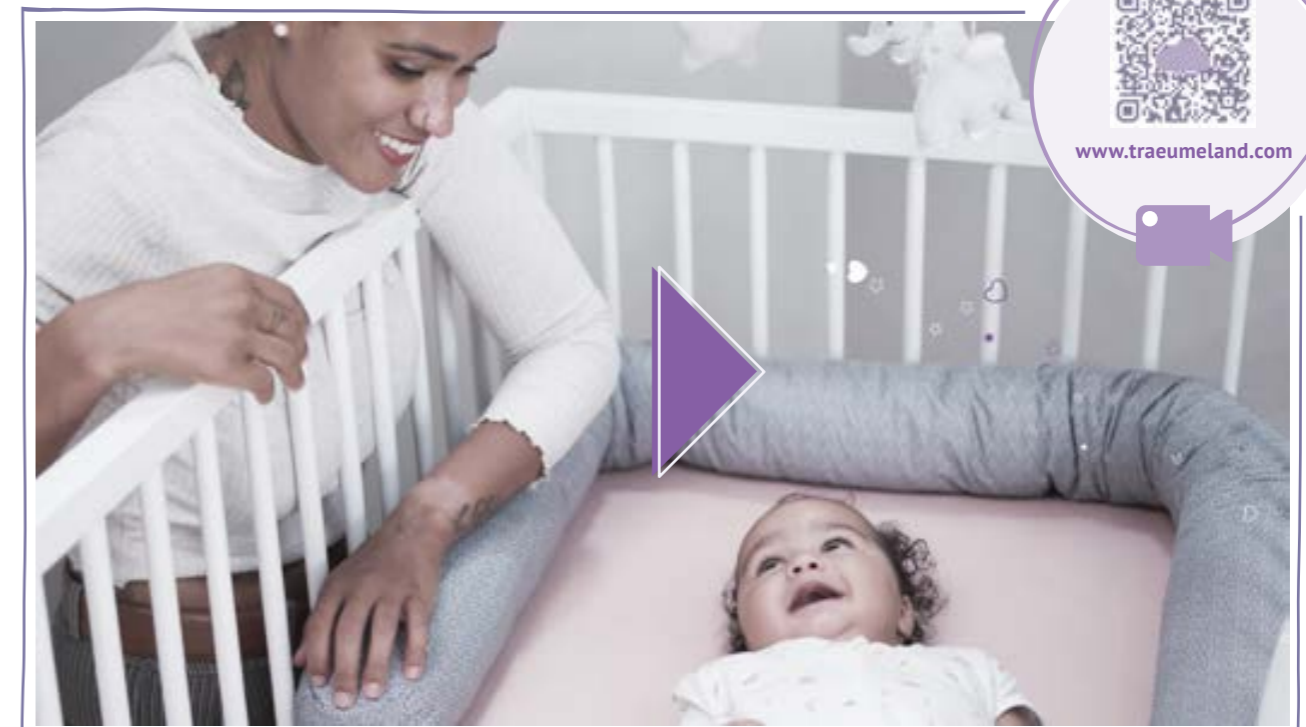
Several air channels in the mattress core, special contour cuts or a 3D air cushion cover carry off the CO2 your baby breathes out, and prevent the unhealthy accumulation of heat. Optimal air circulation means that the baby can breathe more freely and sweats less.

AIR PERMEABLE MATTRESS COVERS

Even the best mattresses can't prevent heat accumulation if the cover isn't permeable and breathable.

REGIONAL PRODUCTION

We are immensely proud that all our mattresses are 100 % produced at our site in Upper Austria. We can thus guarantee consistently high quality and professional workmanship from our highly qualified team.



www.traeumeland.com

QUALITY POINTS:



Every element of our mattresses has been clearly thought through. This applies to the materials processed and to the structure of the mattresses. We are constantly working on optimisations in functionality, and thinking in terms of the years ahead. So that your baby has a healthy sleep.

MATTRESS CORE

MATERIAL:

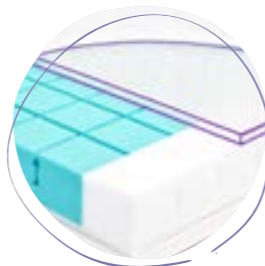
As one of the main components of a mattress, the mattress core material plays an important role. Through a point-by-point elastic mattress core, the spine is optimally relieved of pressure and yet supported so that your baby's backbone can develop healthily.

TIP: Mattresses which are too hard are not suitable for the soft bone structure of a baby. With our products, you can be certain: All our mattresses have the correct degree of hardness.

What is the difference between soft foam, cold foam and special foams?

Basically, all types of foam can be used in a baby bed. However, there are differences in the breathability and the lying comfort. Cold foam has a better air permeability than conventional soft foam and adapts perfectly to accommodate the body. Some models are also made from special foams. These special foams are generally treated cold foams, and are therefore more breathable than normal cold foam. They also relieve the spine more effectively.

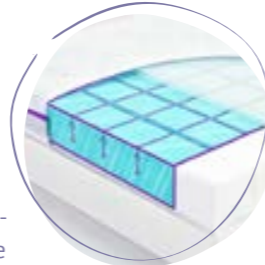
AIR CUSHION LAYER: 3D air cushion layers promise unparalleled permeability and ensure optimal lying comfort. This allows your baby to breathe more freely, and sweat less.



REINFORCED EDGES: Reinforced edges on the longitudinal sides of the mattress are provided for the first attempts at standing in the baby bed. **Since step edges on the head and foot side are too hard for baby heads, we produce our mattresses deliberately with step edges only on the long sides of the mattress.**



3D-COMFORT-PADS: Due to their three-dimensional shape, 3D comfort pads react with high point-by-point elasticity, and relieve any sources of pressure. They thus provide optimum support for your baby's spine. In addition, they guarantee optimum ventilation.



BABY SIDE AND TODDLER SIDE: Two different degrees of hardness in order to protect the spine. It is recommended to turn the baby side over to the toddler side from a weight of 12 kilograms.



INTEGRATED WETNESS PROTECTION

Moisture protection means that small amounts of liquid can be absorbed by the cover if, for example, your baby's diaper is too full. Large amounts of liquid cannot be absorbed.



MATTRESS COVER

AN OVERVIEW OF OUR COVERS:	original sleep safety	COTTON	TENCEL™ BLEND	BETTER DREAMS
MATERIAL COMPOSITION	62 % polyester, 38 % TENCEL™	100 % cotton	68 % polyester, 32 % TENCEL™	60 % polyester, 32 % Lyocell (TENCEL™ x REFIBRA™), 8 % cotton
INTEGRATED WETNESS PROTECTION The mattress core remains dry; the moisture is absorbed on the surface. You can dispense with air-tight wetness protection covers as long as your baby is wearing a nappy.	●	○	○	●
BREATHABLE The baby can breathe freely even when it is sleeping with its mouth and nose against the mattress.	●	●	●	●
60 °C LAUNDRY The covers are suitable for the washing machine and gentle drying programs.*	●	●	●	●
TENCEL™ natural fibre prevents sweating and ensures a dry sleeping climate.	●	○	●	●
QUILTED WITH WASHABLE FLEECE For a cuddly, soft lying surface.*	●	●	●	●

*Except for natural mattresses

REMOVABLE COVER VS. DIVISIBLE COVER:

Removable mattress cover: All our mattress covers are removable and washable.

Divisible mattress cover: Some models also have a divisible mattress cover. The two bed surfaces of the cover are divisible. If the bed is soiled, simply divide the mattress cover, flip the underside to the top and your baby can continue to sleep. You then have enough time to wash the soiled side. Later, you can simply zip the two sides of the cover together and have a complete mattress once again.



QUALITY POINTS:

Our points system ensures easy and reliable orientation through our baby mattress program. The more quality points a mattress scores, the more practical additional functions the respective model has.





CERTIFIED QUALITY

We give you security, as outstanding quality is a matter of course for us. For this reason, all of our products are tested by independent test institutes – for a safe and healthy sleep of your baby.



ÖKO-TEX STANDARD 100

confirms that our products or materials are eminently suitable for use in baby beds. All our mattresses are class 1 certified (for babies). The limit values in this class are especially stringent.



DOWNPASS

guarantees controlled animal husbandry. No down & feathers from live plucking, cage-rearing and foie grass production are used.



FKT

The "medically tested and tested for toxins" seal of the "Fördergemeinschaft körperverträglicher Textilien" identifies body-compatible textiles from which no substances detach which might irritate the skin or harm the body's health.



CERTIPUR

verifies the safety, health-related suitability and environmental compatibility of the foam materials used.



KBA

stands for controlled organic cultivation. Absolutely no artificial fertilizers, pesticides or defoliants are used.



MATTRESS COVERS TESTED FOR ANTIMONY & HARMFUL SUBSTANCE

The Träumeland seal identifies mattress covers which have been tested for antimony and harmful substances.



MIDWIFE TEST

More than 100 independent midwives have scrutinized and tested the LIEBMICH sleeping bag.



DIN EN 16890

Träumeland mattresses are tested in accordance with the DIN EN 16890 standard, and undergo continuous further development.



LGA

identifies mattress foams which are free of emissions and harmful substances.

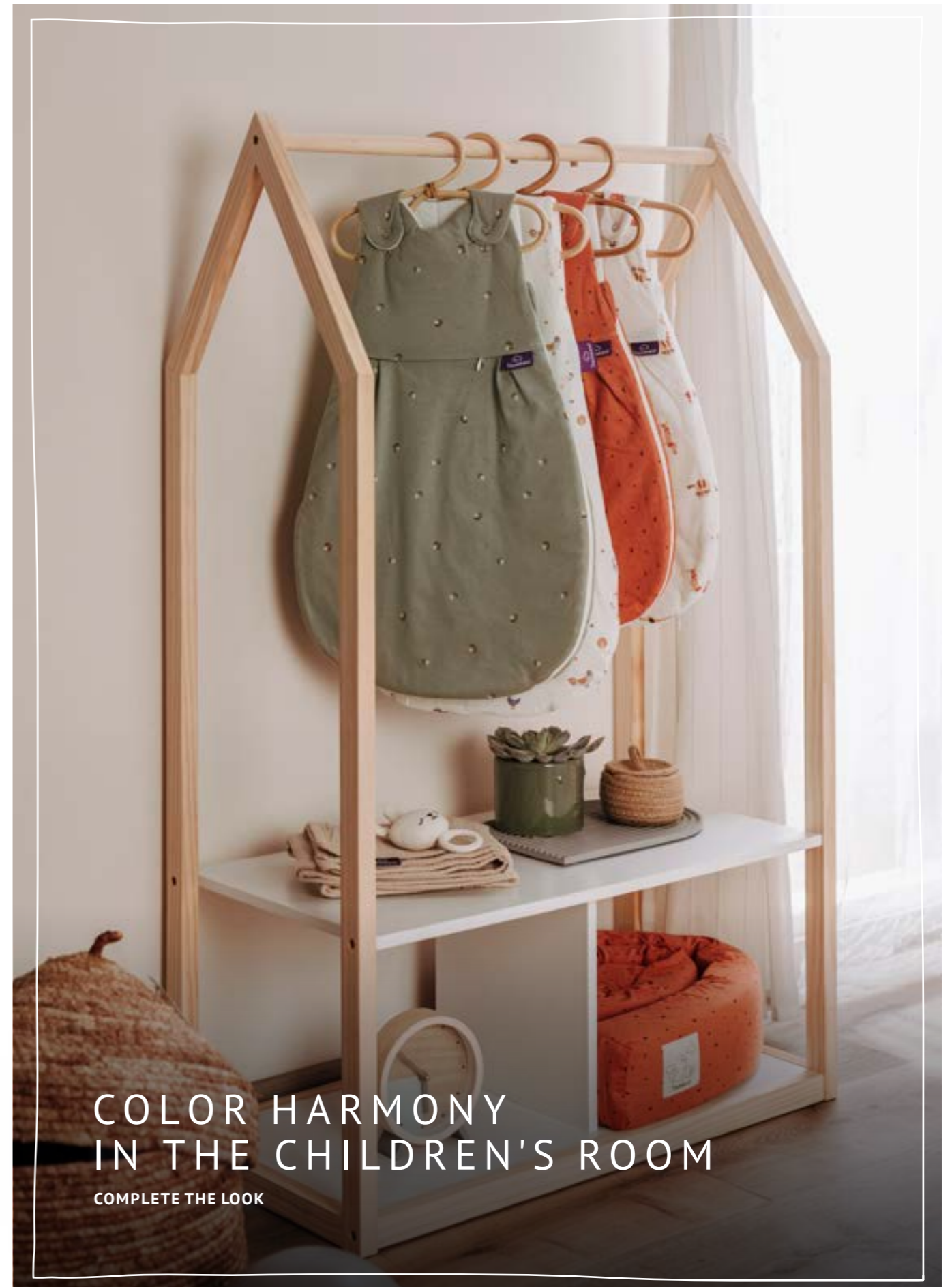


GOTS

The Global Organic Textile Standard was established by internationally recognised organisations with the aim of creating worldwide recognised guidelines to guarantee sustainable textile manufacturing. In this, the entire manufacturing chain is controlled and certified.



You can find the appropriate certificates on the respective product at www.traeumeland.com!



COLOR HARMONY IN THE CHILDREN'S ROOM

COMPLETE THE LOOK



PEOPLE WHO BUY
OUR BABY PRODUCTS
PLACE THEIR TRUST
IN US

Gabi Nösslböck

SMALL MATTRESSES

BASIC · COMFORT · PREMIUM · NATURE

0 TO 6 MONTHS
FOR CRADLES, BASSINETS, CO-SLEEPERS,...

THE STANDARD SIZES FOR OUR SMALL MATTRESSES:

Carrying bag: 28 x 73 cm (oval)* | **Cradle:** 40 x 80 cm (rectangular), 40 x 90 cm (rectangular), 45 x 90 cm (rectangular), 50 x 90 cm (rectangular)*, 50 x 100 cm (rectangular) | **Bassinet:** 37 x 70 cm (oval) | **Handcart:** 46 x 82 cm (oval) | **Co-Sleeper:** 42 x 80 cm (2 rounded corners), 45 x 88 cm (2 rounded corners)*, 50 x 88 cm (2 rounded corners), 57,5 x 105 cm (2 rounded corners)*, 50 x 83 cm (4 rounded corners)*, 55 x 90 cm (rectangular)* | **Stroller:** 33 x 78 cm (oval)*, 36 x 78 cm (oval)**

You can find further sizes on www.traeumeland.com! Special sizes can be ordered via specialist traders.

More information on quality points on page 8

*Only available for Wash, Sleepy and Brise Light
**Special dimensions up to 55 x 110 cm possible



3
QUALITY GRADE
QUALITÄTSPUNKTE

WASH

COVER: cotton

CORE: soft foam mattress | Height: 5 cm

VENTILATION: ☆☆☆☆☆

MATTRESS COVER: ★☆☆☆☆

MATTRESS CORE: ★☆☆☆☆

Suitable for allergy sufferers
Air cushion layer

Integrated wetness protection



9
QUALITY GRADE
QUALITÄTSPUNKTE

SLEEPY

COVER: Top side: Functional cover "sleep dry" | Underside: cotton

CORE: fine soft foam mattress with vertical ventilation channels | Height: 5 cm

VENTILATION: ★★☆☆☆

MATTRESS COVER: ★★★★★

MATTRESS CORE: ★★☆☆☆

Suitable for allergy sufferers
Air cushion layer

Integrated wetness protection



15
QUALITY GRADE
QUALITÄTSPUNKTE

BRISE LIGHT

COVER: Top side: multifunctional cover "sleep safety", quilted with 3D air cushion layer | Underside: polyester

CORE: cold foam mattress with vertical ventilation channels | Height: 6 cm

VENTILATION: ★★★★★

MATTRESS COVER: ★★★★★

MATTRESS CORE: ★★☆☆☆

Suitable for allergy sufferers
Air cushion layer

Integrated wetness protection



16
QUALITY GRADE
QUALITÄTSPUNKTE

LITTLE ANGEL

COVER: multifunctional cover "sleep safety"

CORE: high-quality viscoelastic foam with ventilation channels | Height: 6 cm

VENTILATION: ★★★★★

MATTRESS COVER: ★★★★★

MATTRESS CORE: ★★★★★

Suitable for allergy sufferers
Air cushion layer

Integrated wetness protection



NATUR
QUALITY GRADE
QUALITÄTSPUNKTE

NATURE CLOUDS

COVER: organic cotton from controlled biological cultivation

CORE: latexed coconut, sheathed in breathable sheep's wool | Height: 3 cm

VENTILATION: ★★☆☆☆

MATTRESS COVER: ★★★★★

MATTRESS CORE: ★★☆☆☆

Suitable for allergy sufferers
Air cushion layer

Integrated wetness protection



THE PERFECT MATTRESS

FOR ALL COMMON PRAMS



BRISE LIGHT FITTING FOR:

ABC Samba & Salsa 4: 34,5 x 76 cm (4 rounded corners)

Bugaboo Donkey 5: 34 x 78 cm

Bugaboo Fox 3: 33 x 77 cm

Cybex Priam: 32 x 78 cm (oval)

Hartan: 33 x 78 cm (oval)

Uppababy Vista V2 & Cruz V2: 32 x 75 cm (oval)

Joolz Day +: 34 x 78 cm (4 rounded corners)

Joolz Geo3: 33 x 79 cm (4 rounded corners)

Easywalker Jimmey, Naturkind Lux Evo: 36 x 79 cm (4 rounded corners)

Elsa & Emil: 36 x 78 cm (oval)

WHY IS IT IMPORTANT TO HAVE YOUR OWN MATTRESS?

- Purchased strollers often do not include such high quality mattresses.
- A used mattress is not hygienic.
- The baby should build up its own microbiological environment. A used mattress can promote allergies.



BABY MATTRESSES

BASIC · COMFORT · PREMIUM · NATURE

0 TO 5 YEARS
FOR COTS IN THE SIZES
60 X 120 CM OR 70 X 140 CM



WHICH MATTRESS IS RIGHT FOR MY BABY?

When choosing from so many different models, the decision is certainly not easily made. On our Träumeland website, you will therefore find great explanatory videos on all the mattress functions that will help you choose the right mattress.

WHY IS A VENTILATED MATTRESS SO IMPORTANT?

Of primary importance when purchasing a mattress is the selection of a "breathing mattress". Most of you have surely already read about these or heard of them. But why is this the case, and what is really important here? The combination of airpermeable mattress covers and ventilation

systems in the mattress core ensure that your baby can breathe freely and does not sweat in their bed. Air channels and breathable materials cause the air within the mattress to circulate. CO2 exhaled by the baby is transported away, and unhealthy heat accumulations are avoided.

HOW HARD MAY A BABY MATTRESS BE?

Many parents are uncertain regarding the correct degree of hardness for baby mattresses. The following basic principle applies: Not too hard and not too soft. Because the spine of new-born babies is not yet fully developed, a point-by-point elastic mattress core is of particular importance in the first months of life. A point-by-point elastic mattress core optimally relieves the spine of pressure and

yet supports it so that your baby's backbone can develop healthily. Of course, as one of the main components of the mattress, the mattress core material and quality play a particularly important role (you can find more information on page 6).



OVERVIEW OF OUR BABY MATTRESSES

Sizes: 60 x 120 cm | 70 x 140 cm

You can find small mattresses for cradles, bassinets, co-sleepers and much more on pages 14-15.
You can find mattresses for kids' beds on page 34.



More information here or on page 8

BASIC	Image	Model	Quality Grades	Ventilation	Cover	Core	Suitable for those with allergies	Air cushion layer	Reinforced edges	3D-comfort-pads	Baby and toddler side	Integrated wetness protection	Divisible cover	Removable cover	Page
							★	★	★	★	★	★	★	★	
		Softwash	3	☆☆☆☆☆	☆☆☆☆☆	☆☆☆☆☆	★	★	★	★	★	★	★	★	20
		Rainbow	5	☆☆☆☆☆	☆☆☆☆☆	☆☆☆☆☆	★	★	★	★	★	★	★	★	21
		Shootingstar	6	☆☆☆☆☆	☆☆☆☆☆	☆☆☆☆☆	★	★	★	★	★	★	★	★	21

COMFORT	Image	Model	Quality Grades	Ventilation	Cover	Core	Suitable for those with allergies	Air cushion layer	Reinforced edges	3D-comfort-pads	Baby and toddler side	Integrated wetness protection	Divisible cover	Removable cover	Page
							★	★	★	★	★	★	★	★	
		Milky way	12	☆☆☆☆☆	☆☆☆☆☆	☆☆☆☆☆	★	★	★	★	★	★	★	★	22
		Sunset	14	☆☆☆☆☆	☆☆☆☆☆	☆☆☆☆☆	★	★	★	★	★	★	★	★	22
		Moonshine	15	☆☆☆☆☆	☆☆☆☆☆	☆☆☆☆☆	★	★	★	★	★	★	★	★	23
		Dream planet	16	☆☆☆☆☆	☆☆☆☆☆	☆☆☆☆☆	★	★	★	★	★	★	★	★	23

PREMIUM	Image	Model	Quality Grades	Ventilation	Cover	Core	Suitable for those with allergies	Air cushion layer	Reinforced edges	3D-comfort-pads	Baby and toddler side	Integrated wetness protection	Divisible cover	Removable cover	Page
							★	★	★	★	★	★	★	★	
		North star	16	☆☆☆☆☆	☆☆☆☆☆	☆☆☆☆☆	★	★	★	★	★	★	★	★	24
		Nap star	17	☆☆☆☆☆	☆☆☆☆☆	☆☆☆☆☆	★	★	★	★	★	★	★	★	24
		Butterfly	17	☆☆☆☆☆	☆☆☆☆☆	☆☆☆☆☆	★	★	★	★	★	★	★	★	24
		Octasmart	17	☆☆☆☆☆	☆☆☆☆☆	☆☆☆☆☆	★	★	★	★	★	★	★	★	25
		Sea of Clouds	19	☆☆☆☆☆	☆☆☆☆☆	☆☆☆☆☆	★	★	★	★	★	★	★	★	25
		Breeze	21	☆☆☆☆☆	☆☆☆☆☆	☆☆☆☆☆	★	★	★	★	★	★	★	★	25
		Whirlwind	22	☆☆☆☆☆	☆☆☆☆☆	☆☆☆☆☆	★	★	★	★	★	★	★	★	30
		Spring air	22	☆☆☆☆☆	☆☆☆☆☆	☆☆☆☆☆	★	★	★	★	★	★	★	★	30
		Airkiss	22	☆☆☆☆☆	☆☆☆☆☆	☆☆☆☆☆	★	★	★	★	★	★	★	★	31

BETTER DREAMS EDITION

★	Image	Model	Quality Grades	Ventilation	Cover	Core	Suitable for those with allergies	Air cushion layer	Reinforced edges	3D-comfort-pads	Baby and toddler side	Integrated wetness protection	Divisible cover	Removable cover	Page
							★	★	★	★	★	★	★		
		Tree	13	COMFORT	☆☆☆☆☆	☆☆☆☆☆	★	★	★	★	★	★	★	★	28
		Wind	16	COMFORT	☆☆☆☆☆	☆☆☆☆☆	★	★	★	★	★	★	★	★	29
		Lake	17	PREMIUM	☆☆☆☆☆	☆☆☆☆☆	★	★	★	★	★	★	★	★	29
		Mountain	22	PREMIUM	☆☆☆☆☆	☆☆☆☆☆	★	★	★	★	★	★	★	★	29

NATURE	Image	Model	Quality Grades	Ventilation	Cover	Core	Suitable for those with allergies	Air cushion layer	Reinforced edges	3D-comfort-pads	Baby and toddler side	Integrated wetness protection	Divisible cover	Removable cover	Page
							★	★	★	★	★	★	★		
		Nature luck	NATURE	☆☆☆☆☆	☆☆☆☆☆	☆☆☆☆☆	★	★	★	★	★	★	★	★	32
		Green dream	NATURE	☆☆☆☆☆	☆☆☆☆☆	☆☆☆☆☆	★	★	★	★	★	★	★	★	33



BABY MATTRESSES



SOFTWASH

COVER: cotton
CORE: simple soft foam | Height: 9 cm

- 🔄 VENTILATION: ☆☆☆☆☆
 - 🛏 MATTRESS COVER: ★☆☆☆☆
 - 🛏 MATTRESS CORE: ★☆☆☆☆
-
- ⚙ Suitable for allergy sufferers
 - 🌬 Air cushion layer
 - 🔧 Reinforced edges
 - 🛏 3D-comfort-pads
 - 👶 Baby and toddler side
 - 🔧 Divisible cover
 - 🛏 Integrated wetness protection



You can obtain all baby mattresses in the sizes 60 x 120 cm and 70 x 140 cm, as well as in special dimensions up to a size of 75 x 160 cm.



RAINBOW

COVER: cotton
CORE: ventilated cold foam for a healthy sleeping climate | Height: 10 cm

- 🔄 VENTILATION: ☆☆☆☆☆
 - 🛏 MATTRESS COVER: ★☆☆☆☆
 - 🛏 MATTRESS CORE: ★☆☆☆☆
-
- ⚙ Suitable for allergy sufferers
 - 🌬 Air cushion layer
 - 🔧 Reinforced edges
 - 🛏 3D-comfort-pads
 - 👶 Baby and toddler side
 - 🔧 Divisible cover
 - 🛏 Integrated wetness protection



SHOOTING STAR

COVER: cotton
CORE: ventilated mattress with reinforced edges for a healthy sleeping climate | Height: 10 cm

- 🔄 VENTILATION: ☆☆☆☆☆
 - 🛏 MATTRESS COVER: ★☆☆☆☆
 - 🛏 MATTRESS CORE: ★☆☆☆☆
-
- ⚙ Suitable for allergy sufferers
 - 🌬 Air cushion layer
 - 🔧 Reinforced edges
 - 🛏 3D-comfort-pads
 - 👶 Baby and toddler side
 - 🔧 Divisible cover
 - 🛏 Integrated wetness protection



EVERY BABY SHOULD HAVE ITS OWN MATTRESS

Scientists have conducted research which suggests that it is very unhealthy for babies to sleep on a used mattress. This can lead to allergies and skin problems, and also the risk of "sudden infant death syndrome" is substantially higher for babies sleeping on "hand-me-down" mattresses. If the mattress has been handed down from an older sibling, then this risk is substantially lower. In spite of this, we recommend that you procure a new mattress for each baby.





MILKY WAY

COVER: functional cover "sleep dry"
CORE: ventilation channels for good air circulation | Height: 11 cm

- 🔄 **VENTILATION:** ★★☆☆☆
- 🛏 **MATTRESS COVER:** ★★★★★
- 🛏 **MATTRESS CORE:** ★★☆☆☆

- ⚙️ Suitable for allergy sufferers
- 🛏 Air cushion layer
- 🔧 Reinforced edges
- 🛏 3D-comfort-pads
- 👶 Baby and toddler side
- 🔧 Divisible cover
- 🛏 Integrated wetness protection



SUNSET

COVER: multifunctional cover "sleep safety"
CORE: nubbed structure in the cold foam core for good lying comfort | Height: 11 cm

- 🔄 **VENTILATION:** ★★☆☆☆
- 🛏 **MATTRESS COVER:** ★★★★★
- 🛏 **MATTRESS CORE:** ★★☆☆☆

- ⚙️ Suitable for allergy sufferers
- 🛏 Air cushion layer
- 🔧 Reinforced edges
- 🛏 3D-comfort-pads
- 👶 Baby and toddler side
- 🔧 Divisible cover
- 🛏 Integrated wetness protection



You can obtain all baby mattresses in the sizes 60 x 120 cm and 70 x 140 cm, as well as in special dimensions up to a size of 75 x 160 cm.



MOONSHINE

COVER: multifunctional cover "sleep safety"
CORE: ventilation contour cut for good lying comfort | Height: 11 cm

- 🔄 **VENTILATION:** ★★★★★
- 🛏 **MATTRESS COVER:** ★★★★★
- 🛏 **MATTRESS CORE:** ★★☆☆☆

- ⚙️ Suitable for allergy sufferers
- 🛏 Air cushion layer
- 🔧 Reinforced edges
- 🛏 3D-comfort-pads
- 👶 Baby and toddler side
- 🔧 Divisible cover
- 🛏 Integrated wetness protection



DREAM PLANET

COVER: multifunctional cover "sleep safety"
CORE: free-standing, round 3D comfort pads for spine support | Height: 11 cm

- 🔄 **VENTILATION:** ★★☆☆☆
- 🛏 **MATTRESS COVER:** ★★★★★
- 🛏 **MATTRESS CORE:** ★★☆☆☆

- ⚙️ Suitable for allergy sufferers
- 🛏 Air cushion layer
- 🔧 Reinforced edges
- 🛏 3D-comfort-pads
- 👶 Baby and toddler side
- 🔧 Divisible cover
- 🛏 Integrated wetness protection





16
QUALITÄTSPUNKTE

NORTH STAR

COVER: multifunctional cover "sleep safety" with extra-wide breathable venting material

CORE: with unique more-way ventilation system for incomparable air permeability | Height: 11 cm

- VENTILATION: ★★☆☆☆
- MATTRESS COVER: ★★★★★
- MATTRESS CORE: ★★☆☆☆

- Suitable for allergy sufferers
- Air cushion layer
- Reinforced edges
- 3D-comfort-pads
- Baby and toddler side
- Divisible cover
- Integrated wetness



17
QUALITÄTSPUNKTE

NAP STAR

COVER: multifunctional cover "sleep safety" with side breathable venting material

CORE: highly flexible, free-standing 3D comfort pads for excellent lying comfort | Height: 11 cm

- VENTILATION: ★★☆☆☆
- MATTRESS COVER: ★★★★★
- MATTRESS CORE: ★★☆☆☆

- Suitable for allergy sufferers
- Air cushion layer
- Reinforced edges
- 3D-comfort-pads
- Baby and toddler side
- Divisible cover
- Integrated wetness



17
QUALITÄTSPUNKTE

BUTTERFLY

COVER: multifunctional cover "sleep safety" with side breathable venting material

CORE: free-standing 3D comfort pads in a sweet butterfly design for spine support | Height: 11 cm

- VENTILATION: ★★☆☆☆
- MATTRESS COVER: ★★★★★
- MATTRESS CORE: ★★☆☆☆

- Suitable for allergy sufferers
- Air cushion layer
- Reinforced edges
- 3D-comfort-pads
- Baby and toddler side
- Divisible cover
- Integrated wetness



17
QUALITÄTSPUNKTE

OCTASMART

COVER: multifunctional cover "sleep safety"

CORE: free-standing, ventilated 3D comfort pads for spine support | Height: 11 cm

- VENTILATION: ★★★★★
- MATTRESS COVER: ★★★★★
- MATTRESS CORE: ★★☆☆☆

- Suitable for allergy sufferers
- Air cushion layer
- Reinforced edges
- 3D-comfort-pads
- Baby and toddler side
- Divisible cover
- Integrated wetness



no special size possible



19
QUALITÄTSPUNKTE

SEA OF CLOUDS

COVER: multifunctional cover "sleep safety" with side breathable venting material

CORE: good mattress ventilation through breathable 3D air cushion material | Height: 11 cm

- VENTILATION: ★★★★★
- MATTRESS COVER: ★★★★★
- MATTRESS CORE: ★★☆☆☆

- Suitable for allergy sufferers
- Air cushion layer
- Reinforced edges
- 3D-comfort-pads
- Baby and toddler side
- Divisible cover
- Integrated wetness



21
QUALITÄTSPUNKTE

BREEZE

COVER: multifunctional cover "sleep safety" with side breathable venting material

CORE: open-pore cold foam for improved lying comfort | Height: 11 cm

- VENTILATION: ★★★★★
- MATTRESS COVER: ★★★★★
- MATTRESS CORE: ★★★★★

- Suitable for allergy sufferers
- Air cushion layer
- Reinforced edges
- 3D-comfort-pads
- Baby and toddler side
- Divisible cover
- Integrated wetness



You can obtain all baby mattresses in the sizes 60 x 120 cm and 70 x 140 cm, as well as in special dimensions up to a size of 75 x 160 cm.

BREATH SUSTAINABLE



Why are we climate-neutral?

COMMITMENT FOR A BETTER FUTURE.

Sustainability is for us and all the employees in our company much more than simply a buzz word. For us it also represents an attitude. To identify where and how we can improve we asked a renowned company to calculate our CO₂ footprint and, in doing so, every single step of our entire production process was closely examined.

WHAT IS A CO₂ FOOTPRINT?

A CO₂ footprint describes the volume of greenhouse gases which a company produces either directly or indirectly along the entire value chain. This includes all emissions from the raw materials, production, transport, trade, utilisation, recycling and waste disposal. This helped us to establish the immense potential for climate protection that lies in our company. The goal: carbon neutrality.

WHAT DOES CARBON NEUTRALITY MEAN?

If we are unable to save emissions in a particular area directly and immediately, we purchase corresponding certificates with which we support climate protection projects in other parts of the world, for example in India, Africa, Asia and South America. In this way we compensate our emissions with suitable measures in other regions of the world.

The climate does, after all, not differentiate between countries and borders or local, business or other types of interests. The climate is a global, complex and very long-term process which simply takes place.

It is therefore necessary that we understand ourselves as well as our company as part of a greater whole and participate in global efforts for more climate protection.

THE VIEWPOINT: THE FUTURE.

For our children to be able to sleep well they need not only a warm and healthy bed but also a future. We have, meanwhile, learnt to understand global processes and view it as our duty to orientate our actions as well as our economic activity accordingly



“Plenty lies ahead for your child and we ensure that he, or she, can dream of a great and bright future”





BETTER DREAMS EDITION

Sustainable value added cold foam mattress



TREE

COVER: multifunctional cover "sleep safety" with TENCEL™ x REFIBRA™ – the fiber for a sustainable future

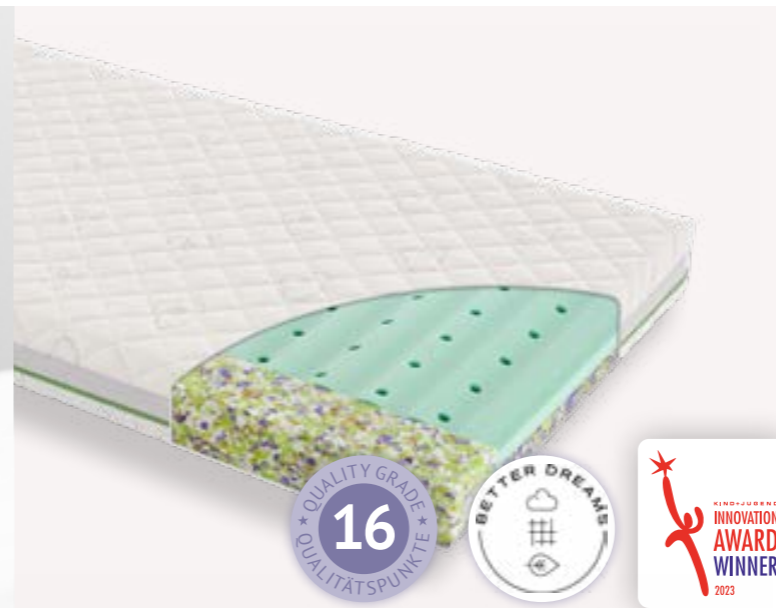
CORE: Mattress core of nearly 100% value-added cold foam for perfect sleeping comfort, only the top and bottom plates are produced in-house. | Height: 11 cm

- 🔄 **VENTILATION:** ★★☆☆☆
- 🛏 **MATTRESS COVER:** ★★★★★
- 🛏 **MATTRESS CORE:** ★★☆☆☆

- ⚙️ Suitable for allergy sufferers
- 🛏 Air cushion layer
- 🔧 Reinforced edges
- 🛏 3D-comfort-pads
- 👶 Baby and toddler side
- 🔧 Divisible cover
- 🛏 Integrated wetness protection



no special size possible



WIND

COVER: multifunctional cover „sleep safety“ with side breathable venting material and TENCEL™ x REFIBRA™ – the fiber for a sustainable future

CORE: Perfect sleeping comfort, due to value-added flake foam and Orbis foam. Mattress core made of more than 50% value-added raw materials. Height: 11 cm

- 🔄 **VENTILATION:** ★★☆☆☆
- 🛏 **MATTRESS COVER:** ★★★★★
- 🛏 **MATTRESS CORE:** ★★☆☆☆

- ⚙️ Suitable for allergy sufferers
- 🛏 Air cushion layer
- 🔧 Reinforced edges
- 🛏 3D-comfort-pads
- 👶 Baby and toddler side
- 🔧 Divisible cover
- 🛏 Integrated wetness protection



LAKE

COVER: multifunctional cover „sleep safety“ with side breathable venting material and TENCEL™ x REFIBRA™ – the fiber for a sustainable future

CORE: free-standing double comfort pads for spine support and perfect ventilation. For unique lying comfort | Height: 11,5 cm

- 🔄 **VENTILATION:** ★★☆☆☆
- 🛏 **MATTRESS COVER:** ★★★★★
- 🛏 **MATTRESS CORE:** ★★☆☆☆

- ⚙️ Suitable for allergy sufferers
- 🛏 Air cushion layer
- 🔧 Reinforced edges
- 🛏 3D-comfort-pads
- 👶 Baby and toddler side
- 🔧 Divisible cover
- 🛏 Integrated wetness protection



no special size possible

MOUNTAIN

COVER: multifunctional cover „sleep safety“ with extra-wide breathable venting material and TENCEL™ x REFIBRA™ – the fiber for a sustainable future

CORE: highly flexible, free-standing cold foam 3D air twists combined with a 3D air cushion material for excellent lying comfort | Height: 11,5 cm

- 🔄 **VENTILATION:** ★★★★★
- 🛏 **MATTRESS COVER:** ★★★★★
- 🛏 **MATTRESS CORE:** ★★★★★

- ⚙️ Suitable for allergy sufferers
- 🛏 Air cushion layer
- 🔧 Reinforced edges
- 🛏 3D-comfort-pads
- 👶 Baby and toddler side
- 🔧 Divisible cover
- 🛏 Integrated wetness protection



no special size possible

BASIC
COMFORT
PREMIUM
NATURE



22
QUALITÄTSPUNKTE

WHIRLWIND

COVER: multifunctional cover "sleep safety" with side breathable venting material
CORE: first METAL-FREE spring mattress | Height: 11,5 cm

- VENTILATION: ★★★★★
- MATTRESS COVER: ★★★★★
- MATTRESS CORE: ★★★★★

- Suitable for allergy sufferers
- Air cushion layer
- Reinforced edges
- 3D-comfort-pads
- Baby and toddler side
- Divisible cover
- Integrated wetness protection

no special size possible



22
QUALITÄTSPUNKTE

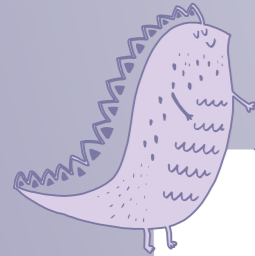
SPRING AIR

COVER: multifunctional cover "sleep safety" with side breathable venting material
CORE: climate-regulating Cellpur foam for excellent lying comfort | Height: 11,5 cm

- VENTILATION: ★★★★★
- MATTRESS COVER: ★★★★★
- MATTRESS CORE: ★★★★★

- Suitable for allergy sufferers
- Air cushion layer
- Reinforced edges
- 3D-comfort-pads
- Baby and toddler side
- Divisible cover
- Integrated wetness protection

no special size possible



HARMFUL SUBSTANCES? NOT FROM US!

We allow only 'good' materials in our products – so your baby can sleep risk-free. Children's sensitive skin reacts more quickly to harmful substances than that of adults, because their immune system is not yet fully developed. Baby products you can trust in. Ongoing and stringent quality controls go without saying – our products are also checked regularly by independent testing institutes.



You can find extrahigh FITTED SHEETS for this mattress on page 88!

22
QUALITÄTSPUNKTE

AIRKISS

COVER: multifunctional cover "sleep safety" with side breathable venting material
CORE: special foam "Breeze" in combination with 3D air cushion for unique lying comfort | Height: 14 cm

- VENTILATION: ★★★★★
- MATTRESS COVER: ★★★★★
- MATTRESS CORE: ★★★★★

- Suitable for allergy sufferers
- Air cushion layer
- Reinforced edges
- 3D-comfort-pads
- Baby and toddler side
- Divisible cover
- Integrated wetness protection

no special size possible





NATURE LUCK

COVER: organic cotton from controlled biological cultivation
CORE: coconut mattress combined with natural latex and sheathed in breathable sheep's wool for good ventilation | Height: 9 cm

- 🔄 **VENTILATION:** ★★☆☆☆
- 🛏️ **MATTRESS COVER:** ★★☆☆☆
- 🛏️ **MATTRESS CORE:** ★★★★★

- ⚙️ Suitable for allergy sufferers
- 🛏️ Air cushion layer
- 🛏️ Reinforced edges
- 🛏️ 3D-comfort-pads
- 👶 Baby and toddler side
- 🛏️ Divisible cover
- 🛏️ Integrated wetness protection



PRECIOUS MOMENTS AT BEDTIME

Bedtime should always be a routine. When you do the same things every night at bedtime, this familiarity helps your baby to find calmness and a healthy, restorative sleep. This ritual can be whatever you want it to be. A bedtime routine not only shortens the time it takes for the baby to fall asleep, but also deepens the relationship between babies and their parents in a very special way. Here are a few loving ideas:

- ★ Lullabies
- ★ Finger games
- ★ A musical toy
- ★ Baby massage
- ★ Bath for the baby

You can obtain all baby mattresses in the sizes 60 x 120 cm and 70 x 140 cm, as well as in special dimensions up to a size of 75 x 160 cm.

THE POSITIVE EFFECTS OF SWISS PINE:

Swiss pine wood is a favourite natural material for sleep due to its positive effects on well-being and health. Swiss pine promotes a more rapid and efficient recuperation process when asleep, is proven to keep moths and dust mites at bay and prevents mould.



- 1 MOISTURE ABSORPTION**
Through sheep wool fibre (enhanced with Swiss stone pine chippings) for a healthy sleeping environment
- 2 SECURITY**
Reinforced edges made of Swiss stone pine wood for even more safety
- 3 100 % NATURAL**
The entire mattress is made from 100 % natural materials
- 4 TEMPERATURE-BALANCING**
Thanks to a breathable sheep's wool sheath
- 5 PREMIUM COMFORT**
Finest natural latex on the baby (nubbed structure) and toddler side
- 6 TOP VENTILATION**
Through vertical air channels on the baby and toddler side

GREEN DREAM

COVER: organic cotton from controlled biological cultivation
CORE: the first baby mattress with Swiss stone pine wood for a healthy sleeping climate | Height: 10 cm

- 🔄 **VENTILATION:** ★★★★★
- 🛏️ **MATTRESS COVER:** ★★☆☆☆
- 🛏️ **MATTRESS CORE:** ★★★★★

- ⚙️ Suitable for allergy sufferers
- 🛏️ Air cushion layer
- 🛏️ Reinforced edges
- 🛏️ 3D-comfort-pads
- 👶 Baby and toddler side
- 🛏️ Divisible cover
- 🛏️ Integrated wetness protection



No special sizes possible | only available in size 70 x 140 cm



WHY SHOULD I BUY A SPECIAL KIDS' AND YOUTH MATTRESS

WHEN I CAN ALSO BUY AN
ADULT MATTRESS?



Because a child's spine is not fully developed, it needs a children's mattress that yields only where pressure is exerted. Your child's bones grow much faster than their muscles, so an unsuitable sleeping surface can be detrimental to spinal development. This in turn can trigger posture problems, back pain and tension, because children's weight and size differ considerably from those of an adult.

Two firmness levels especially for children and youngsters: soft and medium-hard. If your child weighs 35 kilos or more, we recommend turning the mattress from the soft to the medium-hard side for optimal lying comfort.

Cuddly soft TENCEL™ covers reduce sweating and ensure a dry sleeping environment.

Air permeable materials ensure a pleasant sleeping environment.

No wetness protection in the cover.



KIDS' AND YOUTH MATTRESSES

2 TO 15 YEARS OR UP TO 70 KG
FOR BEDS IN SIZES

80 X 160 CM*, 90 X 160 CM*, 90 X 190 CM,
90 X 200 CM, 100 X 200 CM, 120 X 200 CM,
140 X 200 CM

*only available for selected models: Full Moon, Slumberland and Forest Air

KIDS' AND YOUTH MATTRESSES



To reduce our CO2 emissions in transport our children's mattresses are delivered rolled. Our video shows you how to properly unpack them.



PASTEL DREAM

COVER: TENCEL™ blend
CORE: ventilated cold foam | Height: 12 cm

- VENTILATION: ★★☆☆☆
- MATTRESS COVER: ★★★★★
- MATTRESS CORE: ★☆☆☆☆

- Suitable for allergy sufferers
- 2 degrees of hardness
- Air cushion layer
- Divisible cover
- 3D-comfort-pads
- 7-zone cut



UNIVERSUM

COVER: TENCEL™ blend
CORE: corrugated contour cut for good lying comfort | Height: 14 cm

- VENTILATION: ★★☆☆☆
- MATTRESS COVER: ★★★★★
- MATTRESS CORE: ★★☆☆☆

- Suitable for allergy sufferers
- 2 degrees of hardness
- Air cushion layer
- Divisible cover
- 3D-comfort-pads
- 7-zone cut



FULL MOON

COVER: TENCEL™ blend
CORE: excellent lying comfort through cube contour cut | Height: 14 cm

- VENTILATION: ★★☆☆☆
- MATTRESS COVER: ★★★★★
- MATTRESS CORE: ★★☆☆☆

- Suitable for allergy sufferers
- 2 degrees of hardness
- Air cushion layer
- Divisible cover
- 3D-comfort-pads
- 7-zone cut



SLUMBERLAND

COVER: TENCEL™ blend with side breathable venting material
CORE: 3D comfort pads for excellent lying comfort | Height: 15 cm

- VENTILATION: ★★★★★
- MATTRESS COVER: ★★★★★
- MATTRESS CORE: ★★★★★

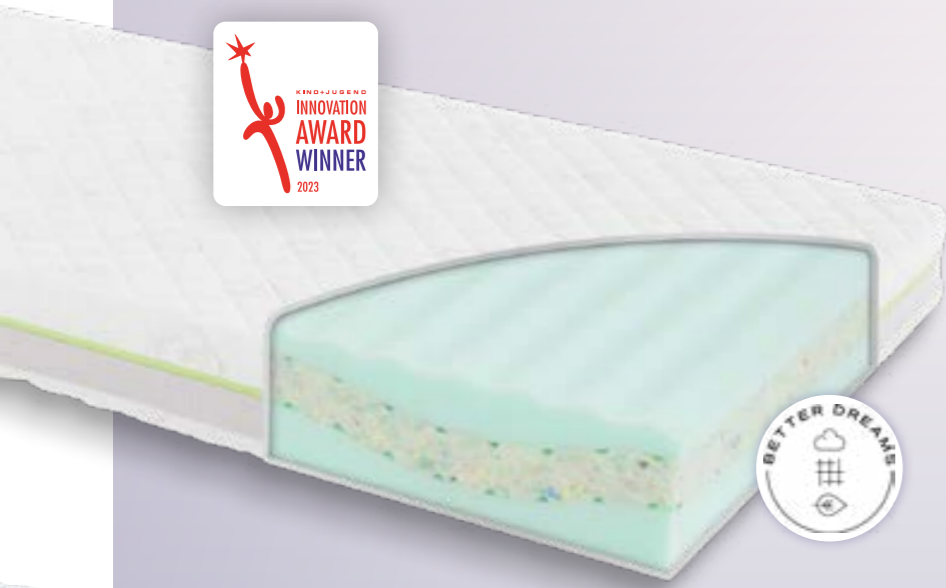
- Suitable for allergy sufferers
- 2 degrees of hardness
- Air cushion layer
- Divisible cover
- 3D-comfort-pads
- 7-zone cut



TWO FIRMNESS LEVELS OF HARDNESS

In order to guarantee optimum lying comfort, we have developed our kids' and youth mattresses with 2 different hardness ratings - soft and medium-hard. We recommend that you turn the mattress from the soft to the medium-hard side from a weight of approximately 35 kilograms.

You can obtain the mattresses in sizes 90 x 190 cm | 90 x 200 cm | 100 x 200 cm | 120 x 200 cm | 140 x 200 cm and in special sizes up to 160 x 200 cm.



WIND

COVER*: TENCEL™ x REFIBRA™ - the fiber for a sustainable future.
CORE: Mattress core made of 50% value-added raw materials. Perfect sleeping comfort, due to value-added cold foam and Orbis foam.

- 🔄 **VENTILATION:** ★★★★★☆
- 🛏 **MATTRESS COVER:** ★★★★★★
- 🛏 **MATTRESS CORE:** ★★★★★★

- 🌀 Suitable for allergy sufferers
- 🛏 2 degrees of hardness
- 🛏 Air cushion layer
- 🛏 Divisible cover
- 🛏 3D-comfort-pads
- 🛏 7-zone cut



FOREST AIR

COVER: TENCEL™ blend with side breathable venting material
CORE: unique lying comfort through high-quality Cellpur® foam | Height: 15 cm

- 🔄 **VENTILATION:** ★★★★★☆
- 🛏 **MATTRESS COVER:** ★★★★★★
- 🛏 **MATTRESS CORE:** ★★★★★★

- 🌀 Suitable for allergy sufferers
- 🛏 2 degrees of hardness
- 🛏 Air cushion layer
- 🛏 Divisible cover
- 🛏 3D-comfort-pads
- 🛏 7-zone cut



OCTASMART XL

COVER: TENCEL™ blend with side breathable venting material
CORE: ventilated, free-standing 3D comfort pads for excellent lying comfort and ventilation | Height: 15 cm

- 🔄 **VENTILATION:** ★★★★★☆
- 🛏 **MATTRESS COVER:** ★★★★★★
- 🛏 **MATTRESS CORE:** ★★★★★★

- 🌀 Suitable for allergy sufferers
- 🛏 2 degrees of hardness
- 🛏 Air cushion layer
- 🛏 Divisible cover
- 🛏 3D-comfort-pads
- 🛏 7-zone cut



no special size possible



GREEN AIR

COVER: TENCEL™ blend with side breathable venting material
CORE: healthy sleeping climate through Swiss stone pine chippings in the mattress core | Height: 15 cm

- 🔄 **VENTILATION:** ★★★★★★
- 🛏 **MATTRESS COVER:** ★★★★★★
- 🛏 **MATTRESS CORE:** ★★★★★★

- 🌀 Suitable for allergy sufferers
- 🛏 2 degrees of hardness
- 🛏 Air cushion layer
- 🛏 Divisible cover
- 🛏 3D-comfort-pads
- 🛏 7-zone cut

no special size possible



UP TO 90 KG

SEA BREEZE

COVER: TENCEL™ blend with side breathable venting material
CORE: excellent resting comfort thanks to the 7-zone cut and emc® sensitive foam | Height: 15 cm

- 🔄 **VENTILATION:** ★★★★★★
- 🛏 **MATTRESS COVER:** ★★★★★★
- 🛏 **MATTRESS CORE:** ★★★★★★

- 🌀 Suitable for allergy sufferers
- 🛏 2 degrees of hardness
- 🛏 Air cushion layer
- 🛏 Divisible cover
- 🛏 3D-comfort-pads
- 🛏 7-zone cut

no special size possible



NATURE STAR

COVER: organic cotton from certified organic cultivation with side breathable venting material
CORE: the finest natural latex on both lying surfaces combined with cold foam | innovative sandwich design | horizontal and vertical ventilation channels | nub structure for extra sleeping comfort | Height: 15 cm

- 🔄 **VENTILATION:** ★★★★★★
- 🛏 **MATTRESS COVER:** ★★★★★★
- 🛏 **MATTRESS CORE:** ★★★★★★

- 🛏 2 degrees of hardness
- 🛏 Divisible cover



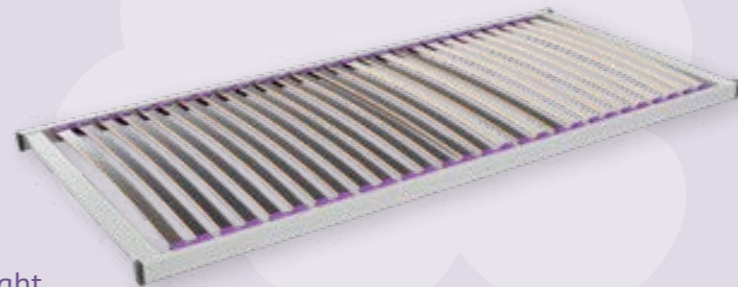
IT'S ROSTI – YOUR GROWING WITH THE CHILD SLATTED BED FRAME

*I am glad I can move in with you
in your room from now on!*

To help you sleep well from
the start, I've collected a few
tips:

THIS IS HOW YOU USE ME PROPERLY:

If you weigh **less than 35 kg**, then the light
grey spring bar belongs at the head end,
from **35 kg onwards** you can turn me. That
way, I adapt perfectly to your needs.
It's okay to lay on me for up to 120 kg, so
if your parents are jealous, you can gift me
to them as well. I don't need any special
care, but I'd be happy if you cleaned the
dust off me with a wet cloth from time to
time.



ANOTHER LITTLE SECRET:

I prefer to lie under a Träumeland youth mattress, because we get along very well.
If you have any questions, feel free to contact my friends at Träumeland. I'm sure they
can help you.



Share your #aufinsträumeland moment.
Follow us on Instagram **@traeumeland** and
share your special moment with your
favourite Träumeland product. We always
love to receive many lovely pictures of our
products.

PLAYPEN MATTRESSES

SUPPORT YOUR BABY IN ANY
POSITION: FOR SAFE LYING;
SITTING AND STANDING



BASIC

COVER: Top side: cotton | Underside:
polyester spun fleece
CORE: fine soft foam | Height: 5 cm

MATTRESS SIZES:
68 x 98 cm | 71 x 92 cm | 74 x 94 cm |
85 x 92 cm | 98 x 98 cm | 100,5 x 100,5 cm

* Further sizes available on request



PLAY & DREAM

COVER: Top side: Multifunctional cover "sleep safe-
ty" with integrated wetness protection | Underside:
polyester
CORE: point-by-point elastic cold foam with vertical
air channels for good ventilation | Height: 5 cm

MATTRESS SIZES*:
68 x 98 cm | 71 x 92 cm | 74 x 94 cm | 75 x 95 cm |
76 x 98 cm | 92 x 92 cm | 98 x 98 cm | 98 x 113 cm |
100,5 x 100,5 cm | 71 x 97 cm | 118 x 118 cm

* Further sizes available on request



You can obtain playpens in special
dimensions up to a size of 120 x 120 cm.

TRAVEL COT MATTRESSES

PACKED IN A CONVENIENT, REUSABLE CARRY BAG



Core color may vary

GOOD

COVER: polyester
CORE: soft foam | Height: 4 cm

⊗ **MATTRESS SIZE:** 60 x 120 cm



AIR

COVER: Top side: 3D air cushion layer | Underside: polyester | Perfect ventilation through 3D material
CORE: fine soft foam with vertical air channels | Height: 5 cm

⊗ **MATTRESS SIZE:** 60 x 120 cm

WETNESS PROTECTION COVERS

FOR A DRY NIGHT

AIRSAFE 3D

Unique wetness protection cover with 3D air cushion | The 3D air cushion improves the air circulation

MATERIAL: Top side: 3D air cushion | Underside: Molton made from cotton with an inserted polyurethane membrane

⊗ **SIZES:** 30 x 70 cm, 40 x 50 cm, 40 x 90 cm, 58 x 74 cm, 50 x 70 cm, 60 x 80/110 cm, 60 x 120 cm, 70 x 112/155 cm, 70 x 140 cm, 90 x 200 cm, 120 x 200 cm

MOLTON COVER

Waterproof, absorbent bed insert | Not air-permeable

MATERIAL: molton made from cotton with an inserted polyurethane membrane

⊗ **SIZES:** 40 x 50 cm, 50 x 70 cm, 40 x 90 cm, 70 x 100 cm, 60 x 120 cm, 70 x 140 cm, 90 x 200 cm, 120 x 200 cm, 140 x 200 cm



AIRDRY

Water-tight bed insert combined with 3D air cushion cover. The wetness protection is in the central area only, resulting in incomparable permeability in the head and foot area

MATERIAL: Top: 3D air cushion | Underside middle (not the whole underside): molton made from cotton with PU membrane inside

⊗ **SIZES:** 60 x 120 cm, 70 x 140 cm

PROTECTIVE MATTRESS COVER

AIR

To protect and care for the mattress | no wetness protection

MATERIAL: 3D comfort pads

⊗ **SIZES:** 40 x 90 cm, 60 x 120 cm, 70 x 140 cm, 90 x 200 cm

“HOME” THE BREATHING NEST

SLEEP SNUGLY, JUST LIKE IN MOM'S TUMMY

Best lying comfort!
High quality mattress to protect the spine

Whether the Träumeland nest "home" is placed in your bed or a cot, used as an insert in a pram, or simply placed on the sofa, your baby will sleep consistently and comfortably, and above all, without sweating.



mobile
Ideal for at home and on the road

filling
polyester beads

foldout
Perfect fit for your baby



PREMIUM

Lying Surface: 80 cm

Nest with high-quality cold foam and dual ventilation thanks to the embossed centre as well as in the side through the innovative mushroom shape.

The included 3D spacer fabric on the mattress offers additional ventilation and comfort for the protection of the spine.

The Nest can be used flexibly thanks to it being possible to fold out and make smaller. Ideal for when you want to feel as comfortable as at home – also when away from home.

The special Tencel™ fibre is especially skin-friendly and prevents you from getting too hot.

DESIGN:
PARTLY SOLID COLOURS AND PARTLY WITH GRAY BOTTOM



All home nests overview



COMFORT

Lying surface: 69 cm

Greater comfort thanks to the high-quality soft foam mattress, offers perfect protection for the spine and ensures the baby feels super comfortable.

And, thanks to it being possible to fold out, the Nest can be used for even longer. Ideal for when you want to feel as comfortable as at home – also when away from home. The Nest is wonderfully cosy and made with high-quality jersey cotton for a pleasant feeling on the skin.



DESIGN:
SOLID COLOURS



DESIGN:
BEIGE BOTTOM



LIEBMICH SLEEPING BAG

THE BREATHING
SLEEPING BAG



WHY SHOULD MY BABY SLEEP IN A SLEEPING BAG?

Sleeping bags are a better alternative to blankets, because using baby sleeping bags instead of traditional baby blankets significantly reduces the risk of heat buildup or over-covering your baby.



Recommended by
MIDWIVES

RECOMMENDED BY MIDWIVES

Since nobody is closer to expectant parents as the midwife and their opinion is especially important to us, we have interviewed more than 100 midwives about our LIEBMICH sleeping bag. The result is impressive.

WHY SWADDLE?

Swaddling in the first weeks after birth gives your baby the familiar closeness and security of its mother's womb. The swaddle sleeping bag is comfortably tight and has a calming effect. Not sure how tightly to swaddle your baby? The Träumeland swaddle sleeping bag is perfect for you because the shape and tightness are pre-defined!

WHAT MAKES OUR LIEBMICH SLEEPING BAG SO UNIQUE?

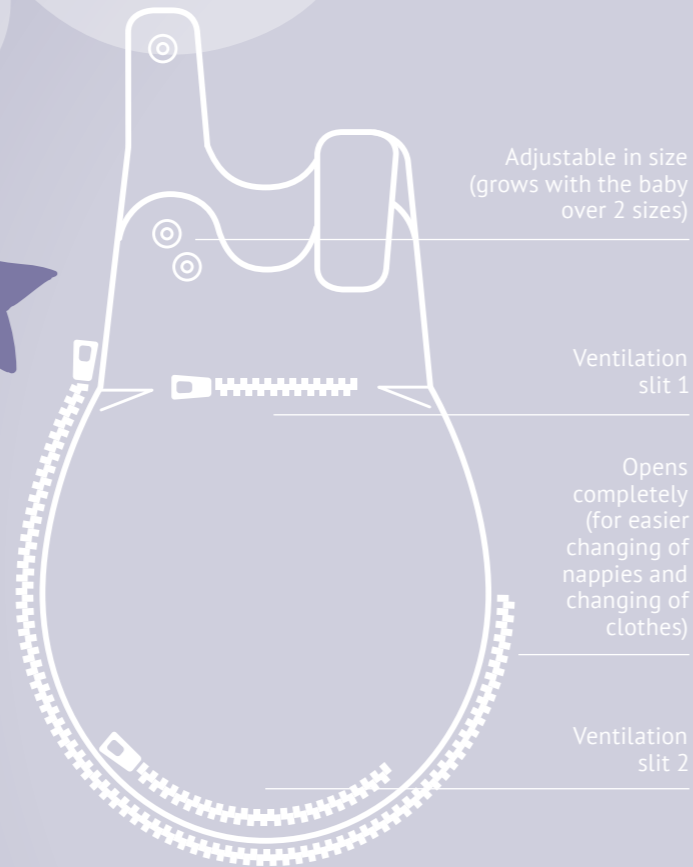


Outer material : cotton
Filling: 30 % TENCEL™, 70 % polyester
Inner sack: cotton

2.5 TOG

The TOG rating indicates the warmth textiles provide – how warm your baby is in a sleeping bag at a certain room temperature. The higher the TOG rating, the warmer your baby will be. Nightwear should be chosen according to the TOG rating. The TOG rating is standardised and tested in special procedures.

Further details to help you choose on page 50.



Double ventilation regulation

The two ventilation slits on the sleeping bag can be opened using zips and permit an optimum air supply depending on requirements. This stops the baby overheating.



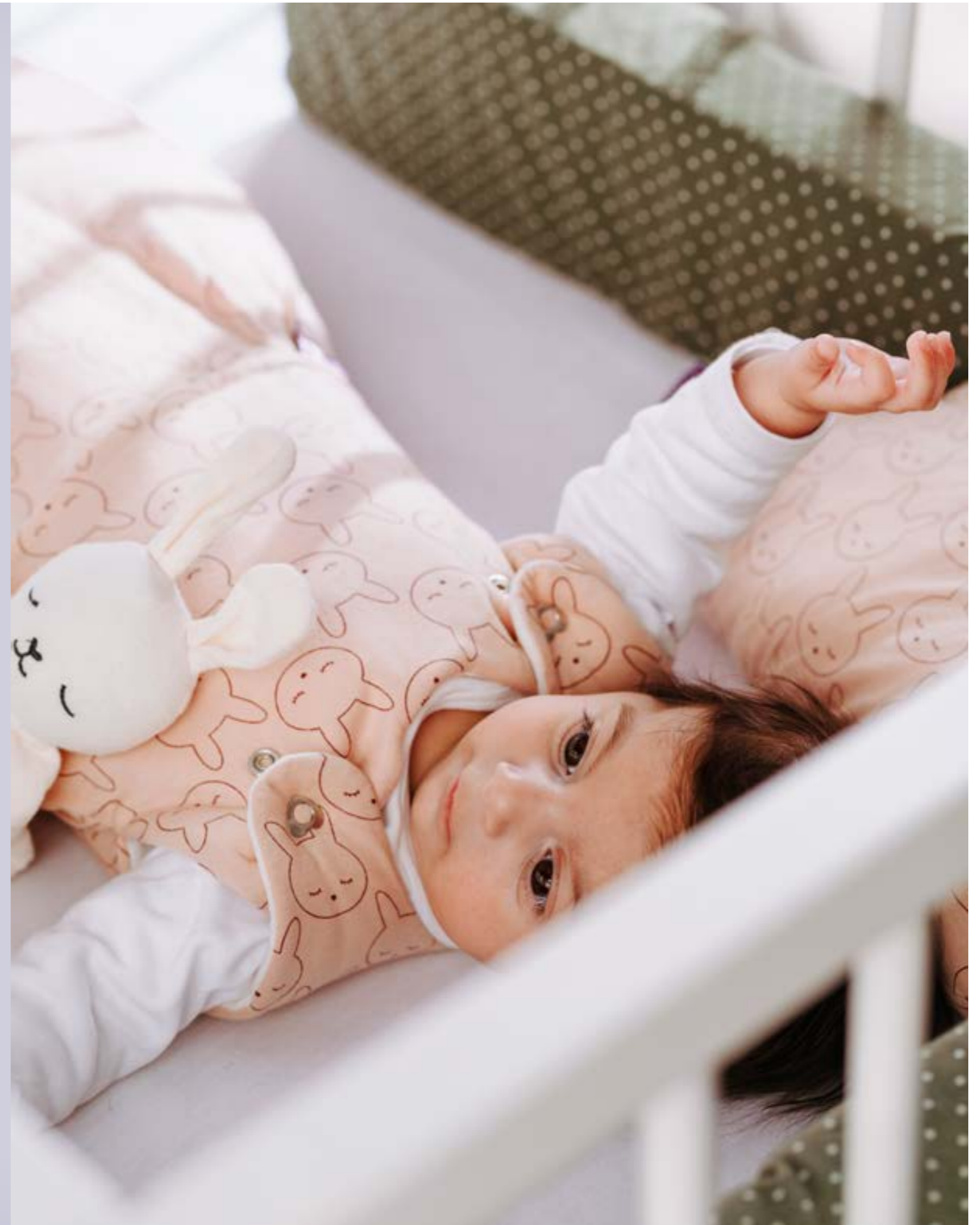
Tested for antimony & harmful substances

All our products have been tested multiple times and independently for antimony and harmful substances, and are verifiably suitable for use in baby beds.



Natural fibres for a sustainable and healthy sleep

The innovative TENCEL™ fibre is made from 100% sustainable wood, is biodegradable and absorbs considerably more moisture than cotton.



TIPS FOR SLEEPING BAG SELECTION

WHICH SIZE IS THE RIGHT ONE?

AVAILABLE SIZES

SIZE OF THE SLEEPING BAG	BODY LENGTH OF THE BABY (CM)	AGE OF THE BABY (MONTHS)	BABY SLEEPING BAG	SET BABY SLEEPING BAG WITH TWO INNER SLEEPING SACKS	SET BABY SLEEPING BAG WITH ONE INNER SLEEPING SACK
44	< 50 cm	premature baby/new-born	★		★
50/56	50-56	0 to 2	★	★	
56/62	56-62	2 to 3	★	★	
62/68	62-68	3 to 6	★	★	
68/74	68-75	6 to 11	★	★	
80/86	75-85	11 to 20	★	★	
104	97-105	3 to 4 years	★		
110	105-112	4 to 5 years	★		



In general: Your baby must grow out of the suitable sleeping bag. If your baby still has to grow into the sleeping bag, the bag is too large!

WITH TOG VALUES TO AN OPTIMAL SLEEPING CLIMATE

WHICH CLOTHING CAN MY BABY WEAR INSIDE THE SLEEPING BAG?

It is impossible to make generalised statements here; as sleeping bags differ in warmth. Do not be fooled by the thickness of the sleeping bag material.

ROOM TEMPERATURE	INNER SLEEPING BAG (0.5 TOG)	OUTER SLEEPING BAG (2.5 TOG)	SET (Inner & outer sleeping bag)	SUMMER (0.5 TOG, 1.0 TOG)	LIGHT TO GO (0.5 TOG)	SLEEPING BAG TO GO (2.5 TOG)
24 °C +	+			+	+	
22-24 °C	+ or			+	+	
20-22 °C		+ or				+ or
18-20 °C		+	+			+
16-18 °C			+			
< 16 °C			+ or			

1 TOG = 0,1 m²K/W



CATS&DOGS***

FARFALLE*

KIKERIKI*

FOREST ANIMALS***

DINOLINO*



CUDDLY BUNNY GREEN*

CUDDLY BUNNY BEIGE*



FISH · MINT*

FISH · BROWN*



CUDDLY BUNNY



LITTLE BEAR



CUDDLY CAT

*also available in size 62/68
 **also available in size 104/110
 *** available in sizes 62/68 and 104/110



NEW

FIORE GREEN*



NATURE LOVE · ROSE*



NATURE LOVE · GREEN*



CACTUS LOVE***



NEW

MOON RUST*



LITTLE HOUSE*



JUNGLE*



FLORAL



STARS · GREY***



NEW

LITTLE DOTS OLIVE*



DOTS · BLUE



LITTLE DOTS · MINT



LITTLE DOTS · GREY



TWISTER · BEIGE*



TWISTER · BLUE*



TWISTER · GREEN*



DOTS · BLACK



DROPS · OCEAN BLUE



CLOUD · MINT



DREAM OF STARS · BLUE



DREAM OF STARS · YELLOW



FAIRYTALE GOLD*



HEARTSOME*



HEART · ROSE



BRUMBRUMM

*also available in 62/68

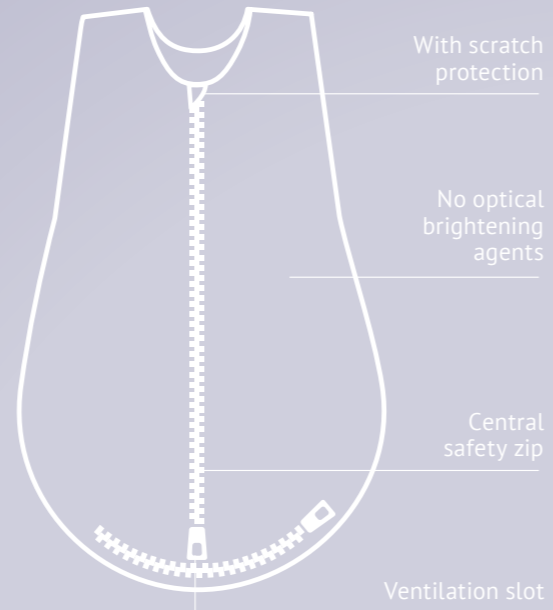
** also available in 104/110

*** available in 62/68 and 104/110



SUMMER SLEEPING BAG LIEBMICH

0.5 TOG



MADE OF COTTON
MATERIAL:
100 % cotton

SIZES: 60, 70, 80*, 90, 110



*Size 80 only available for featured designs



MADE OF COTTON MUSLIN
MATERIAL:
100 % cotton muselin

SIZES: 60, 70, 90, 110

MADE OF TENCEL™

MATERIAL:
70 % TENCEL™,
30 % cotton

TENCEL™ natural fibre prevents sweating and ensures a dry sleeping climate.

☒ SIZES: 60, 70, 80**, 90, 110

NEW



FIORE GREEN

SUMMER FRESHNESS



CIRCLES MINT

WHITE WITH GREY STARS

ANCHOR

BRUMBRUMM

INNER SLEEPING SACK

☒ SIZES: 44, 50, 56, 62, 68, 74, 80, 86

- Without optical brighteners
- Without ribbons for more safety
- Heart stick



**only available for Fiore Green

LIEBMICH SLEEPING BAG

FROM CONTROLLED ORGANIC CULTIVATION

Ensure your baby enjoys a super cosy night's sleep with our GOTS certified Liebmich sleeping bags. The natural fibres create the perfect sleep environment whilst adjustable ventilation ensures the prevention of any build-up of heat in the baby's cot.

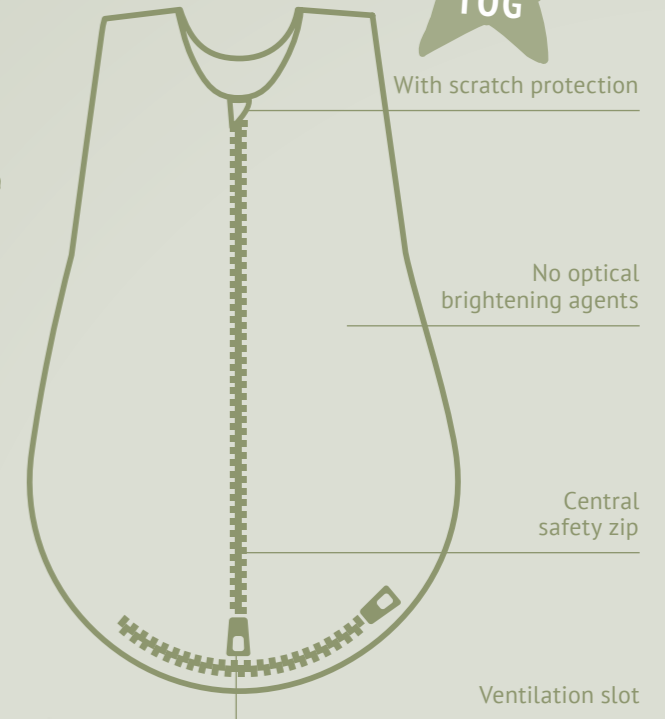
The cotton used in the sleeping bags is certified in accordance with GOTS standards. The Global Organic Textile Standard was established by internationally renowned organisations with the aim of creating worldwide recognised guidelines to ensure sustainable textile manufacturing. In GOTS certification the entire manufacturing chain is controlled and certified. Starting with the procurement of the raw materials and covering environmentally and socially responsible production, GOTS certification offers transparent labelling for credible quality assurance.

MADE OF COTTON

MATERIAL:
100% organic cotton
from controlled
organic cultivation

☒ SIZES: 60, 70, 90, 110

1.0 TOG



ORGANIC
CERTIFIED BY ECOCERT GREENLIFE
LICENCE NO. 247408 TRÄUMELAND



INNER SLEEPING SACK

☒ SIZES: 50, 56, 62, 68, 74, 80, 86

- guaranteed tested for hazardous substances
- without optical brighteners
- without ribbons for more safety
- cotton from controlled biological cultivation
- plenty of kicking space
- opens completely (for easier changing of nappies and changing of clothes)



LEAVES - MINT

LEAVES - BEIGE

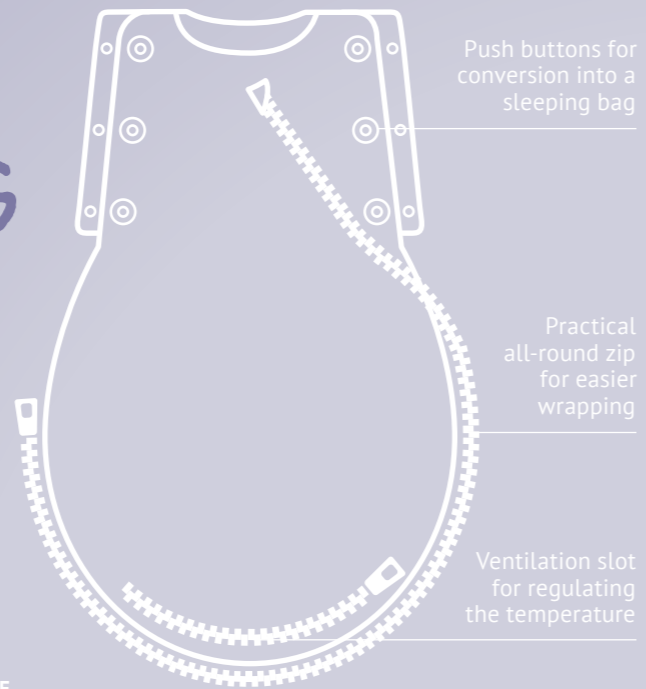
LEAVES - ROSE

SWADDLE-SLEEPING BAG "AIR"

FOR THE FAMILIAR FEELING OF BEING IN THE WOMB

Material: cotton

AGE: 0 - 3 MONTHS



GREY MELANGE

BLUE MELANGE



ALL YEAR SLEEP OVERALL TO GO



On page 50 in the catalogue, you will find tips on **correct size selection** and **tips** on which clothes your baby should wear under the sleeping bag "TO GO".

2.5 TOG

Outer material: cotton
Filling: 30 % TENCEL™, 70 % polyester

SIZES: 74*, 80, 92, 104, 110

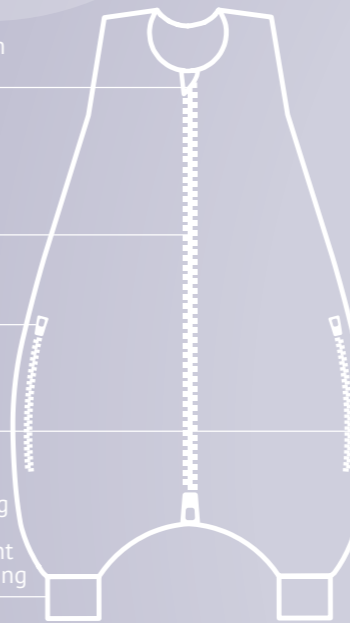
With scratch protection

Central safety zip

Ventilation slot 1

Ventilation slot 2

Safe walking & freedom of movement while sleeping



CUDDLY BUNNY BEIGE

DINOLINO



LITTLE BEAR

CACTUS LOVE

MOON RUST

DREAM OF STARS - YELLOW

DREAM OF STARS - BLUE

*only available for new designs

SLEEP OVERALL LIGHT TO GO

0.5 TOG

SIZES: 74*, 80, 92, 104, 110



MADE OF TENCEL™

MATERIAL:
70 % TENCEL™,
30 % cotton



FIORE GREEN



SUMMER FRESHNESS



BRUMBRUMM



CUDDLY BUNNY GREEN



CUDDLY BUNNY BEIGE



CATS & DOGS



FOREST ANIMALS



DINOLINO



KIKERIKI



FIORE GREEN



MADE OF COTTON

MATERIAL:
100 % cotton



SWEET HOME



CACTUS LOVE



STARS - GREY



LITTLE DOTS OLIVE

*only available for new designs

FOR A HEALTHY AND SAFE SLEEP FOR BABIES

SWITCH SIDES AS OFTEN AS POSSIBLE

For approximately 20 years now, Maria Heinzl has worked as a child physiotherapist, and repeatedly treats babies with deformed craniums or with a one-sided body posture.

>> Ms Heinzl, how do malpositions and deformities in infants occur?

Many deformed craniums develop during the pregnancy due to constricted conditions (for example in case the mother's pelvis is too narrow) or through increased pressure during the birth (for example a suction bell birth). Later, such deformities result through the one-sided positioning of infants. The fact that in recent years babies mainly sleep on their backs in order to reduce the risk of sudden infant death syndrome has increasingly led to flattening of the back of the head in infants.

>> What are the consequences?

A deformed head isn't just cosmetically prominent, but also has an effect on the entire body posture, motor skills and cognition of the infant. In the case of a flattened or side-deformed cranium, the baby's head will always roll onto the flat area. This frequently causes problems with motor skills. Such babies find it hard to turn over, and are repeatedly delayed in their development. Other consequences are also asymmetries of the spine and increased tension, for example in the upper head joint and the jaw musculature. Affected babies are frequently very restless or "cry" babies.

>> What advice do you give to parents?

How can they prevent the problem?

From the start, they should ensure that they repeatedly change the position of the baby, switching sides and also not always carrying them on one side. It is also good to change the position of the cot frequently so that the baby is not always turned towards and light source or towards noise from their siblings as they play.

>> And in which cases do babies need support?

The Care line can also be used for prevention purposes: because infants should sleep on their backs at night, the CAREFOR cushion prevents deformation of the head. If an infant likes to sleep on their side, the side positioning set stops them from rolling onto their tummy. For me, it was very important that the products stimulate motor and sensory skills: for example, many babies dislike lying on their stomachs; and yet this is an important prerequisite for crawling - a wedge cushion makes things easier for them. The Cuddly nest, by the way, is absolutely great, in particular for very small babies: it fits perfectly and stabilises the position of the body. For this reason, I like to recommend the Cuddly nest for "cry" babies, too.

>> How can it be treated?

In the case of babies with cranium deformities, it's important to take the pressure off the deformed area, not only at the practice, but also in daily application at home. I used to have to improvise using various aids, for example towels, for example to support a baby in side position. I now take the side positioning set in the new Care line. I recommend the CAREFOR cushion for babies with deformed heads. Using the cushion, the pressure can be taken away from the deformed area; this wasn't possible beforehand.



Pediatric Physiotherapist Maria Heinzl with 20 years of experience, specialising in the promotional development of infants



TRÄUMELAND CARE

PRODUCTS DEVELOPED WITH EXPERTS

FOR THE OPTIMUM POSITIONING OF YOUR BABY
AND FOR THE PROMOTION OF HEALTHY MOTOR
DEVELOPMENT



More information here

WEDGE CUSHION VISCO

SPECIAL CUSHION FOR OPTIMUM ELEVATED POSITIONING OF BABIES, PARTICULARLY IN CASE OF BABIES WITH COLDS AND BABIES WHO VOMIT EASILY.



0-8 MONTHS

3D air cushion layer for unique air permeability

COVER: Integrated 3D air cushion layer for unique air permeability, removable, washable

FILLING: Visco-elastic foam for optimum adaptation to the body

SIZES: 32 x 40 x 6 cm

WEDGE CUSHION MAXI

SPECIAL CUSHION FOR OPTIMUM ELEVATED POSITIONING OF BABIES, PARTICULARLY IN CASE OF COLDS AND BABIES WHO VOMIT EASILY.



6-18 MONTHS

Breathable due to vertical air channels

COVER: polyester, removable, washable

FILLING: High-quality cold foam with vertical air channels

SIZES: 55 x 35 x 7 cm

All of our mattresses are available in sizes 60 x 120 cm/70 x 140 cm

CAREFOR DEVELOPMENT CUSHION

SPECIAL BABY CUSHION TO PREVENT AND REMEDY DEFORMATION OF THE HEAD.

Unique 2-chamber system for optimum adaptation to the baby's head. Prevents deformation and remedies already existing deformations. Removable and washable cover included.

CUSHION: made from breathable 3D air pockets; prevents sweating in the area of the neck and back of the head.

FILLING: hollow fibre in the form of polyester beads

COVER: TENCEL™-Elastane, removable and washable

SIZES: mini: 22 x 25 cm
midi: 25 x 28 cm
maxi: 28 x 32 cm



6-18 MONTHS
MAXI

2-8 MONTHS
MIDI

0-4 MONTHS
MINI



NORMAL
NORMALLY
DEVELOPED HEAD

Use cushion for prevention purposes without removing cushion content.



BRACHYCEPHALY
FLATDEVELOPED
HEAD

Use cushion for prevention purposes without removing cushion content. Baby's head adapts to the cavity.



PLAGIOCEPHALY
ASYMMETRIC
HEAD

Remove a little bit of the cushion content at the position where the head bulges.



CUDDLY NEST
 FOR IMPROVED BODY PERCEPTION AND PROMOTION OF MOTOR SKILLS DEVELOPMENT



COVER: cotton-jersey
FILLING: hollow fibre in the form of polyester beads
LENGTH: 170 cm

BABY CUSHION CLOUD
 CUDDLY WELLNESS CUSHION.

COVER: multifunctional cover "sleep safety"
FILLING: visco-elastic natural waterlily foam combined with a 3D air cushion layer and vertical air channels
SIZES: 40 x 25 x 3 cm | 40 x 60 x 3 cm



Breathable 3D material and visco-elastic foam for optimum pressure relief and air circulation



CUDDLY CUSHION COVERS
 FOR CAREFOR DEVELOPMENT CUSHION AND BABY CUSHION CLOUD

MATERIAL: 97 % TENCEL™, 3 % elastane, with hotel fold
COLOURED (Cover: 40 x 25 cm)
WHITE (Cover: 22 x 25 cm, 25 x 28 cm, 28 x 32 cm, 40 x 25 cm, 40 x 60 cm)



SIDE POSITIONING CUSHION

KEEPS YOUR BABY STABLE IN SIDE POSITION. LATER ON, THIS CUSHION IS IDEAL AS A SLEEPING AND TRAVEL CUSHION.
LENGTH: 98 cm
COVER: cotton
INNER LINING: cotton
FILLING: fine, low-noise EPS beads



SIDE POSITIONING SET

FOR OPTIMISED AND SECURE STABILISATION IN THE SIDE POSITION.
ROLLS: cover (polyester), filling (soft foam)
MAT: polyester
SIZES: mat 20 x 40 cm | roll heights 8 & 6 cm
 3-part set



DUVETS & PILLOWS

IN DIFFERENT MATERIALS
FOR EACH SEASON OF
THE YEAR



WHICH DUVET IS RIGHT FOR MY BABY?

It isn't easy to choose from all the duvets out there. When choosing the right cover, look primarily at the TOG rating, the cover and filling material.

Material:

Duvets made from TENCEL™ are well-known for their outstanding moisture cotton covers provide good air circulation, down covers are airy and lightweight and special management; fibre covers are very easy-care.

TOG rating:

The higher the TOG rating of a baby cover, the warmer your baby will feel in it.



WHICH DUVET SIZE IS RIGHT FOR MY BABY?

As long as your baby sleeps in a cradle or bassinet, you can use a duvet in the size 80 x 80 cm. If your baby already sleeps in a cot, then the size 100 x 135 cm is suitable. For the youth bed we recommend the sizes 140 x 200 cm and 135 x 200 cm.

Tip: Never use a baby cover and baby sleeping bag together. It will be too warm and can lead to dangerous over-heating.





DUVETS & PILLOWS

CUDDLING IN TRÄUMELAND - PAMPER YOUR BABY WITH OUR COZY DUVETS

TENCEL™

The innovative TENCEL™ fibre absorbs substantially more moisture than cotton, and ensures an even drier and healthier sleeping climate.

	COVER	FILLING	DUVET SIZE	CUSHION SIZE	TOG RATING
LUNA	100% TENCEL™ fine satin	90% TENCEL™ 10% kapok	100 x 135 cm 80 x 80 cm	40 x 60 cm refillable	5
SOLE	100% cotton with aloe vera	90% TENCEL™ 10% kapok	100 x 135 cm 80 x 80 cm	40 x 60 cm 35 x 40 cm	5
TAU*	100% TENCEL™ fine satin	80% TENCEL™ 20% polyester	100 x 135 cm 80 x 80 cm	40 x 60 cm refillable	3,5
MOOS	100% cotton with aloe vera	80% TENCEL™ 20% polyester	100 x 135 cm	40 x 60 cm	6
TENCEL™* set (duvet + cushion)	100% TENCEL™	75% TENCEL™ 25% polyester	140 x 200 cm (set with cushion 70 x 90 cm)** AT 135 x 200 cm (set with cushion 80 x 80 cm)** DE 100 x 135 cm (set with cushion 40 x 60 cm) 80 x 80 cm (set with cushion 35 x 40 cm)		3,5
TENCEL™	100% TENCEL™	75% TENCEL™ 25% polyester	140 x 200 cm (AT) 135 x 200 cm (DE)	X	3,5
MARE*	55% TENCEL™ 45% cotton	80% polyester 20% TENCEL™	100 x 135 cm	X	2
LUNA	100% TENCEL™ fine satin	90% TENCEL™ 10% kapok	140 x 200 cm (AT) 135 x 200 cm (DE)	X	2
TRAUM-DUO**	100% fine cotton-satin	50% TENCEL™ 50% polyester	140 x 200 cm	X	5

*according to DIN EN 16779

The TOG rating indicates the warmth textiles provide – how warm your baby is in a duvet at a certain room temperature. The higher the TOG rating, the warmer your baby will be. The TOG rating is standardised and tested in special procedures.

**ALSO AVAILABLE IN YOUTH SIZE

NATURE

Made from 100% KBA cotton. This cotton is 100% natural, with moisture control, and anti-allergic and extremely skin-friendly properties. Warmth is transmitted effectively: in summer, the blankets keep you cool, and in winter they keep you warm. KBA stands for controlled organic cultivation. This means that absolutely no artificial fertilisers, pesticides or defoliation agents are used.

	COVER	FILLING	DUVET SIZE	CUSHION SIZE	TOG RATING
NATUR-WEICH*	100% organic cotton	100% organic cotton	100 x 135 cm 80 x 80 cm	40 x 60 cm 35 x 40 cm	3,5

DOWN

Down blankets with new class I white down and feathers, which are not obtained from living animals, satisfy with their air-permeable, temperature-balancing and moisture-controlling effect. They are wonderfully airy & light.

	COVER	FILLING	DUVET SIZE	CUSHION SIZE	TOG RATING
DAUNEN-TRAUM	100% cotton	90% natural down 10% feathers	100 x 135 cm 80 x 80 cm	40 x 60 cm 35 x 40 cm	7
DAUNEN-LEICHT*	100% feinstere Baumwollbatist	100% down	100 x 135 cm 80 x 80 cm	X	4
ARIOSO*	100% Baumwolle	90% down 10% feathers	100 x 135 cm 80 x 80 cm	X	4

*according to DIN EN 16779

SPECIAL FIBRES

Special fibres are lightweight and pleasant on baby's skin. They offer ideal environment control and dissipation of moisture. Furthermore, they distinguish themselves by their breathability and durability.

	COVER	FILLING	DUVET & CUSHION SIZE	TOG RATING
MÄRCHEN-WEICH set (duvet + cushion)	100% microfibre	100% 4-hole high-tech hollow fibre	140 x 200 cm** AT (set with cushion 70 x 90 cm) 135 x 200 cm** DE (set with cushion 80 x 80 cm) 100 x 135 cm (set with cushion 40 x 60 cm) 80 x 80 cm (set with cushion 35 x 40 cm)	5,5
MÄRCHEN-WEICH	100% microfibre	100% 4-hole high-tech hollow fibre	140 x 200 cm (AT) 135 x 200 cm (DE)	5,5

**ALSO AVAILABLE IN YOUTH SIZE



ONLY THE BEST

Tested quality is our supreme virtue, which is why all our down products are marked with the Down pass.

THE DOWNPASS STANDARD GUARANTEED:

- ★ 100% traceability from the farm
- ★ Controlled animal husbandry (no live plucking | no foie grass production)



CHILDREN'S PILLOW

FOR SPECIAL SUPPORT OF THE CERVICAL SPINE.

GROWS WITH YOUR CHILD with a removable foam insert.



BASIC
COVER: TENCEL™ polyester cover with laterally air-permeable material
CORE: fine soft foam
SIZE: 57 x 34 x 9 cm



PREMIUM ADVANTAGE
 Uniform pressure distribution thanks to cold foam

PREMIUM
COVER: silky-soft TENCEL™ polyester cover combined with fine spacer fabric and material that is laterally permeable to air, for even more air permeability.
CORE: high-quality, breathable cold foam
SIZE: 57 x 34 x 9 cm

ADVANTAGES

- GROWS WITH YOUR CHILD >>** 2 different heights
- BREATHABLE >>** horizontal ventilation channels
- OPTIMAL SLEEPING COMFORT >>** support the cervical spine

SABBIA

Soft children's pillow to snuggle into: especially breathable thanks to a side ventilation band. Innovative TENCEL™ natural fibre absorbs significantly more moisture

COVER: 100 % TENCEL™ | satin
FILLING: 70 % TENCEL™, 30 % polyester

SABBIA
SIZE: 40 x 60 x 8 cm

SABBIA MAXI
SIZE: 40 x 80 x 5 cm

TIP
 "Cross brown" cushion cover 40 x 60 cm is also available as a separate item and is a perfect fit for the children's pillow! (except for Sabbia Maxi)





OUR BEDDING
CONSISTS OF
FINEST
COTTON-SATIN, IS
CUDDLY-SOFT AND
PROCESSED TO A
VERY HIGH QUALITY

TEXTILES & ACCESSOIRES

FOR A DREAM LIKE
SLEEPING ENVIRONMENT



BABY AND YOUTH BEDDING

FOR A CUDDLY SLEEPING PLACE FOR YOUR CHILD.

BED CLOTHES

Two-piece set made from finest, soft cotton.

Material: 100 % cotton

Baby sizes: 100 x 135 cm + 40 x 60 cm
80 x 80 cm + 35 x 40 cm

Youth sizes: 140 x 200 cm + 70 x 90 cm
135 x 200 cm + 80 x 80 cm

DRAPE

Suitable for all standard drape rods

Material: polyester-cotton

BUMPER

Easy to fasten with binding threads, suitable for cots in size 60 x 120 or 70 x 140, length: 182 cm

Material: cotton + polyester fleece



FIORE GREEN



NEW

MOON RUST



NEW

CATS&DOGS



NEW

MADE OF COTTON-JERSEY
MATERIAL: 100 % cotton

DINOLINO



NEW

CUDDLY BUNNY BEIGE



NEW

CUDDLY BUNNY GREEN



NEW



MADE OF COTTON

MATERIAL:
100 % cotton

LITTLE FARM



FAIRY TALE GOLD



ALSO AVAILABLE
IN YOUTH SIZE

DREAM OF STARS · YELLOW



LITTLE BEAR*



DINOLINO



JUNGLE*



ALSO AVAILABLE
IN YOUTH SIZE

CUDDLY CAT*



CUDDLY BUNNY*



KIKERIKI



CROWN · ROSE*



SUMMER GREEN



CACTUS LOVE*



FOREST ANIMALS



*One bedding set contains one drape, one bumper, one large duvet cover (100 x 135 cm) and one large pillow cover (40 x 60 cm).

COTTON MUSLIN BEDDING

BEDDING

100 % cotton from controlled organic cultivation

Material: 100 % cotton

Baby sizes: 100 x 135 cm + 40 x 60 cm

Youth sizes: 140 x 200 cm + 70 x 90 cm
135 x 200 cm + 80 x 80 cm



BLUE



GREEN



ROSE

The cotton used in the sleeping bags is certified in accordance with GOTS standards. The Global Organic Textile Standard was established by internationally renowned organisations with the aim of creating worldwide recognised guidelines to ensure sustainable textile manufacturing. In GOTS certification the entire manufacturing chain is controlled and certified. Starting with the procurement of the raw materials and covering environmentally and socially responsible production, GOTS certification offers transparent labelling for credible quality assurance.



ORGANIC
CERTIFIED BY ECOCERT GREENLIFE
LICENCE NO. 247408 TRÄUMELAND

BABY BLANKET OF 100% COTTON MUSLIN

BEAUTIFUL TRENDY COLOURS, VERSATILE & PLEASANTLY CUDDLY

SIZE: 75 x 100 cm
MATERIAL: 100% cotton muslin



light blue - apricot - mustard yellow - beige



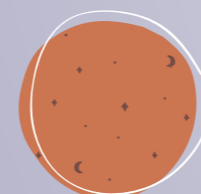
CUDDLY CUSHION

DISCOVER OUR NEW CLOUD AND HEART CUDDLY PILLOWS NOW.

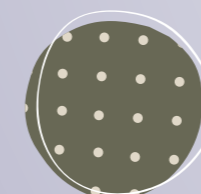
Our new cushions harmonise perfectly with our textile collection and are ideal as gifts. The beautiful colours embellish the cot and fit perfectly on the sofa.



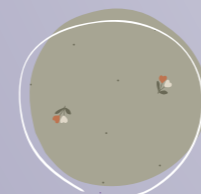
HEART SIZE: 38 x 30 cm
CLOUD SIZE: 36 x 23 cm
MATERIAL:
COVER: 100 % cotton
FILLING: 100 % polyester



MOON RUST



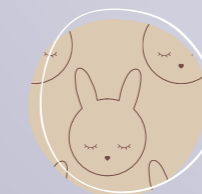
LITTLE DOTS OLIVE



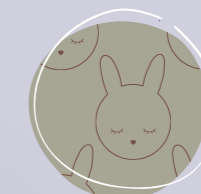
FIORE GREEN



CATS&DOGS



CUDDLY BUNNY BEIGE



CUDDLY BUNNY GREEN



NURSING PILLOW

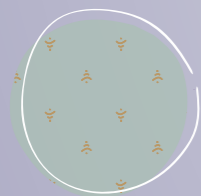
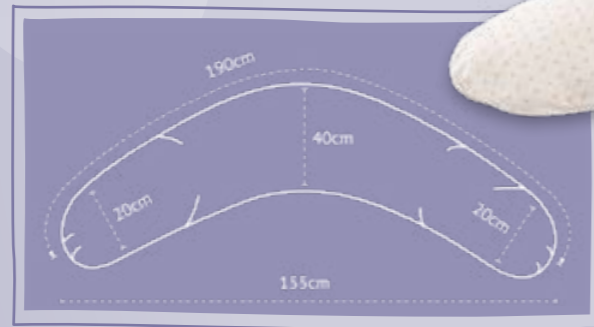
ENSURES A COMFORTABLE
PREGNANCY AND RELAXATION
WHEN BREAST-FEEDING

COTTON

LENGTH: 190 cm
COVER: cotton
FILLING: fine, low-noise EPS beads



TWISTER · BEIGE



TWISTER · GREEN



LITTLE BEAR



TWISTER · BLUE



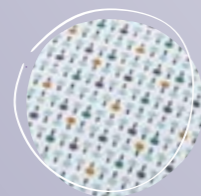
CROWN · ROSE



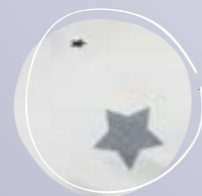
GEO · GREY



GREY BIRDS



GEO · MIX



GREY STARS



GREY

NURSING PILLOW ELASTIC

The elastic nursing cushions are more stretchy
and cuddly due to their elastane content.
LENGTH: 180 cm
COVER: cotton-jersey
FILLING: fine, low-noise EPS beads



BREAST FEEDING



PREGNANCY

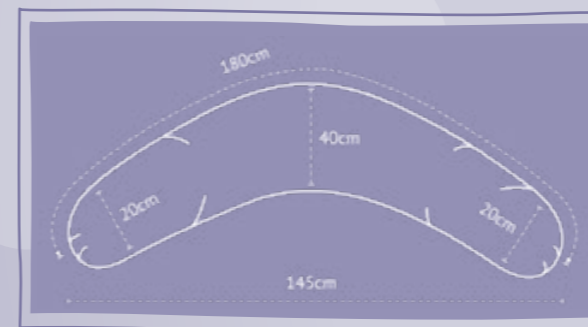


CUDDLING

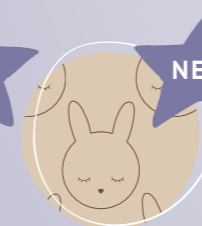


NEW

MOON RUST



CATS & DOGS



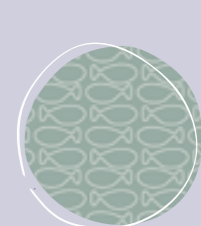
CUDDL Y BUNNY
BEIGE



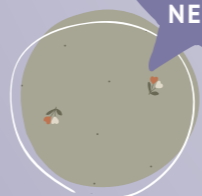
CUDDL Y BUNNY
GREEN



DINOLINO



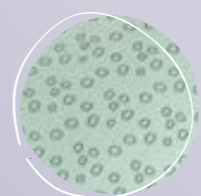
FISH · MINT



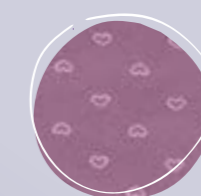
FIORE GREEN



DROPS OCEAN ·
BLUE



CIRCLES · MINT



HEARTSOME



WHITE WITH
GREY STARS



Snake Bed Bumper

PROTECTION AGAINST COT BARS | FITS EVERY COT SIZE

Length: 200 cm
Cover: 100 % cotton
Filling: 100 % polyester



LITTLE DOTS OLIVE

NEW



CATS&DOGS

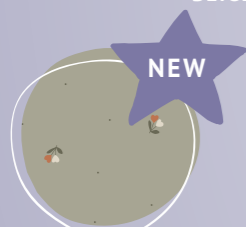
CUDDLY BUNNY BEIGE

CUDDLY BUNNY GREEN

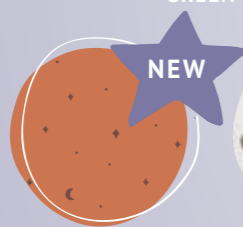
DINOLINO

FOREST ANIMALS

KIKERIKI



FIORE GREEN



MOON RUST



CACTUS LOVE



TWISTER - BEIGE



TWISTER - BLUE



FISH - BROWN



FISH - MINT



FISH - GOLD

Snake Pillow

Length: 140 cm
Ø: 19 cm
Cover: cotton
Filling: polyester down fibre beads

PVC-FREE CHANGING MATS

WIPEABLE
WATERPROOF
USEABLE ON BOTH SIDES

FILLING: sturdy thermo-fleece
COVER: coated cotton
SIZE: 75 x 85 cm



FISH - GOLD

All changing mats overview



TWISTER - BEIGE

TWISTER - BLUE

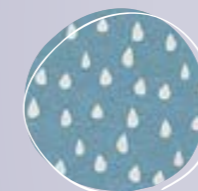
TWISTER - GREEN

LITTLE HOUSE

CUDDLY CAT



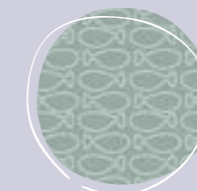
CUDDLY BUNNY



DROPS - OCEAN BLUE



LITTLE BEAR



FISH - MINT



FISH - BROWN



DINOLINO



POINTS - AQUAMARINE



POINTS - ROSA



CACTUS LOVE



WHITE WITH GREY STARS

IN ALL DESIGNS ALSO AS PVC-FREE CHANGING WEDGE AVAILABLE

FILLING: soft foam
COVER: coated cotton

SIZE: 50 X 70 CM

Washable and removable cover



PRINTED CHANGING MATS

WASHABLE | DURABLE | USABLE ON BOTH SIDES

- FILLING:** sturdy thermo-fleece
- SURFACE:** waterproof, phthalate-free foil
- SIZE:** 75 x 85 cm

NEW

KIKERIKI*

NEW

DINOLINO*

NEW

CATS&DOGS*

NEW

FOREST ANIMALS*

NEW

CUDDLY BUNNY BEIGE*

NEW

FIORE BEIGE*

NEW

CROWN · ROSE

NEW

CROWN · BLUE

CHANGING WEDGES

WASHABLE | DURABLE | WIPEABLE | HARD-WEARING

- FILLING:** sturdy thermo-fleece
- SURFACE:** waterproof, phthalate-free foil
- SIZE:** 50 x 70 cm

NEW

FOREST ANIMALS

NEW

KIKERIKI

NEW

CATS&DOGS

NEW

DINOLINO

NEW

CUDDLY BUNNY BEIGE

NEW

FIORE BEIGE

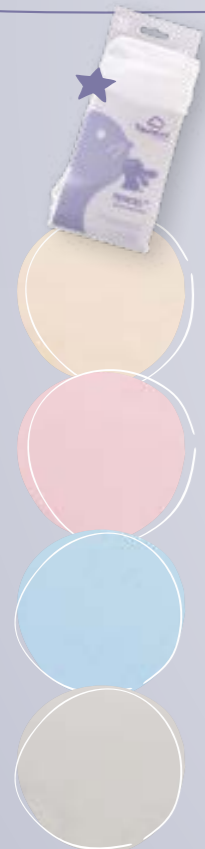
FITTED SHEETS

CUDDLY SOFT | IN DIFFERENT QUALITIES | MANY DIFFERENT COLOURS

- Excellent elasticity and good stretchability
- Quick and easy to put on
- Crease-free fit through stitched edges and rubber band all round
- Non-iron

TENCEL™ (100 % TENCEL™)

Grammage: 160 g/m²
TENCEL™ ensures a particularly dry, healthy sleeping climate, is soft as silk and therefore very skin-compatible.



WHITE
40 x 90 cm
60 x 120 | 70 x 140 cm
90 x 200 cm

BEIGE
60 x 120 | 70 x 140 cm

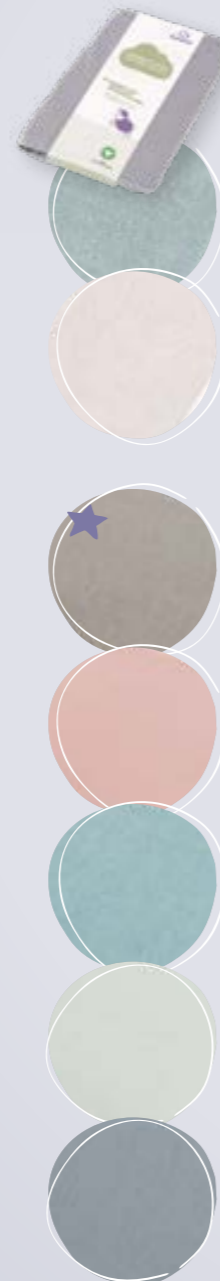
ROSE
60 x 120 | 70 x 140 cm

ROSE
60 x 120 | 70 x 140 cm

LIGHT GREY
60 x 120 | 70 x 140 cm

FITTED SHEETS CERTIFIED ACCORDING TO GOTS STANDARD (100 % COTTON*)

*from controlled organic cultivation
Grammage: 135 g/m²



ANTHRAZIT
35 x 78 cm, 40 x 90 cm, 60 x 120 cm | 70 x 140 cm

MINT
35 x 78 cm, 40 x 90 cm, 60 x 120 cm | 70 x 140 cm

BEIGE
35 x 78 cm, 40 x 90 cm, 60 x 120 cm | 70 x 140 cm

ANTHRACITE
60 x 120 | 70 x 140 cm
90 x 200 cm

MALVE-ROSE
40 x 90 cm
60 x 120 | 70 x 140 cm

OCEAN BLUE
40 x 90 cm
60 x 120 | 70 x 140 cm

MINT
40 x 90 cm
60 x 120 | 70 x 140 cm

DARK GREY
40 x 90 cm
60 x 120 | 70 x 140 cm

JERSEY (100 % COTTON)

Grammage: 160 g/m²
Particularly skin-compatible and smooth.



WHITE
35 x 78 cm, 40 x 90 cm, 50 x 100 cm,
60 x 120 | 70 x 140 cm (Also available in a double pack), 75 x 100 cm, 100 x 100 cm, 90 x 200 cm

BEIGE
40 x 90 cm
60 x 120 | 70 x 140 cm
75 x 100 cm, 100 x 100 cm

ROSE
60 x 120 | 70 x 140 cm

LIGHT BLUE
40 x 90 cm, 60 x 120 | 70 x 140 cm
100 x 100 cm

LIGHT GREY
40 x 90 cm, 60 x 120 | 70 x 140 cm
(Also available in a double pack), 100 x 100 cm

ANTHRACITE
40 x 90 cm, 60 x 120 | 70 x 140 cm
90 x 200 cm

MALVE-ROSE
40 x 90 cm
60 x 120 | 70 x 140 cm

OCEAN BLUE
40 x 90 cm
60 x 120 | 70 x 140 cm

MINT
40 x 90 cm
60 x 120 | 70 x 140 cm

DARK GREY
40 x 90 cm
60 x 120 | 70 x 140 cm

ELASTANE (95 % COTTON, 5 % ELASTANE)

Grammage: 220 g/m²
WITH ROUNDED CORNERS SUITABLE FOR OLIVER FURNITURE:

- Wood
- Sebra

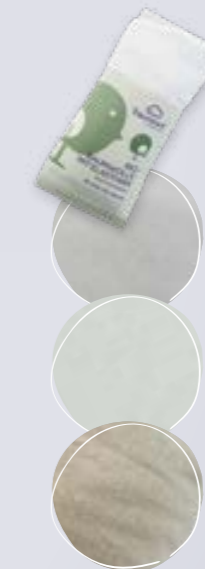


WHITE
65-70 x 112-122 cm, 65-70 x 154-162 cm
90 x 160 cm, 90 x 200 cm

ASH
65-70 x 112-122 cm, 65-70 x 154-162 cm
90 x 160 cm, 90 x 200 cm

ORGANIC COTTON WITH ELASTANE

Grammage: 180 g/m²
Material: 95% cotton (organic), 5% elastane



WHITE
35 x 78 cm, 40 x 90 cm, 60 x 120 cm | 70 x 140 cm
100 x 100 cm, 90 x 200 cm,
120 x 200 | 140 x 200 cm

LIGHT GREY
35 x 78 cm, 40 x 90 cm, 60 x 120 cm | 70 x 140 cm
100 x 100 cm

MINT
35 x 78 cm, 40 x 90 cm, 60 x 120 cm | 70 x 140 cm
100 x 100 cm

ANTHRACITE
35 x 78 cm, 40 x 90 cm, 60 x 120 cm | 70 x 140 cm
100 x 100 cm

★ The sizes 60 x 120 | 70 x 140 are also available for extra-high mattresses up to 15 cm and fit perfectly on the Airkiss cot mattress!

OVERVIEW OF THE MATERIALS USED

ONLY CAREFULLY SELECTED MATERIALS ARE USED FOR THE PRODUCTION OF TRÄUMELAND ITEMS.

MATTRESS COVERS

Cotton

Cotton is one of the most well-known and most widely-used natural materials. Cotton is breathable and highly durable. Therefore it is particularly suitable for use as a mattress cover fabric.



Certified organic cotton

KBA stands for controlled organic cultivation. Absolutely no artificial fertilizers, pesticides or defoliants are used.



Recycled cotton

This describes the upcycling of the main elements of cotton waste. With the addition of pulp, the raw material is made into new fibres to make fabric.



Polyester

Polyester is a particularly durable and elastic fibre – therefore it is particularly suitable for mattress covers, and enhances them.



TENCEL™ (Lyocell)

With TENCEL™, a new age of fibre technology has been introduced. TENCEL™ is a cellulose fibre and is obtained from wood in an environmentally-friendly process. It unites the advantages of many fibres: as fine as silk, as strong as polyester, as easy to care for as acrylic, as cool and pleasant to the touch as linen, as warm as wool; it also absorbs substantially more water vapour than cotton.



REFIBRA™

The innovative TENCEL™ X REFIBRA™ technology offers the possibility to upcycle residual cotton from old clothes into new, pure white cellulose fibres. These can then be used for new products. TENCEL™ X REFIBRA™ fibres come from nature and return to nature. They are completely compostable and biodegradable, even in sea water, and therefore do not create any microplastics.



Washable fleece

100 % polyester | Washable fleece is a washable hollow fibre that is ideally suited for babies with allergies. It has high resilience and adds cushioning to Träumeland mattress covers.



MATTRESS CORES

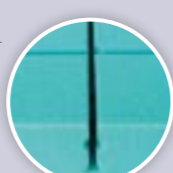
3D air cushion layer

Due to their numerous individual polyester threads, 3D air cushion layers are incomparably breathable and extremely point-by-point elastic. This allows your baby to breathe more freely and sweat less.



Cellpur foam

Cellpur foam contains the natural raw material TENCEL™, which is obtained from wood. Due to the TENCEL™, this foam is highly elastic, absorbs moisture rapidly and thus creates an optimum, dry sleeping climate.



EMC® sensitive

Was originally designed for use in hospitals, due to its anti-bacterial effect. Therefore this foam is especially suitable for allergy sufferers.



EMC® verde foam

The high-quality emc® verde foam is characterised by its very high air permeability and the gel-like pressure distribution for relief of the spine. Castor oil is used to produce emc® verde. It is extracted from the seeds of a tropical miracle tree, and is a natural, sustainable raw material.



Cold foam

In contrast to soft foam, raw materials of a higher quality are used in cold foams. Cold foam has better point-by-point elasticity characteristics, is more breathable and has a longer lifetime. The integration of air channels and contour cuts improves important factors such as ventilation and elasticity.



Latexed coconut

The fibre cushion of the coconut is a purely plant-based padding material. Coconut fibres provide a dry sleeping climate and have good climatic properties. Latexed coconut is also sprayed with rubber latex which substantially improves the air permeability and above all the elasticity.



Natural latex

This highest quality form of latex is manufactured from the milk of the rubber tree. Natural latex is breathable, regulates temperature, is point-by-point elastic and has antiseptic properties which repel most bacteria and dust mites. Natural latex is therefore hypoallergenic.



Octaspring®

The patented Octaspring® aerospace technology offers a new sleep experience with 3D flexibility, 8x better breathability and a 50% lighter texture.



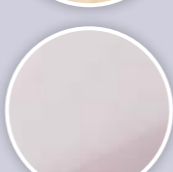
Virgin sheep's wool

Mattresses with a virgin sheep's wool coating convince through high moisture absorption.



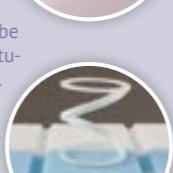
Soft foam

This concerns polyurethane foam.



Special plastic springs

Special plastic springs stabilise wherever pressure is applied, and thus ensure unique lying characteristics in order to protect the spine. They are completely metal-free – as verified in numerous inspections, bedrooms should be kept free of metal, as the Earth's natural magnetic field can be disrupted.



Special foam "Breeze"

10 x more breathable than conventional cold foam. Guaranteed perfect air permeability, rapid humidity absorption and optimised thermal regulation.



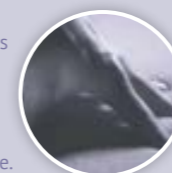
Rebounded foam

High quality cuttings are shredded into flakes in this manufacturing process to form rebounded foam and reformed under pressure from the still liquid cold foam.



Visco-elastic gel foam

This foam is known for its temperature-regulating effect due to the integrated gel particles. It ensures optimum pressure equalisation and support of the spine. The open-pore structure makes it particularly air-permeable and suitable for use in a baby bed.



Swiss stone pine

The Swiss stone pine grows in the high mountain regions under extreme climatic conditions and under controlled forestry management. The Swiss stone pine ensures a more rapid and efficient recovery process during sleep, is proven to repel moths and mites and prevents mould formation.



TEXTILES

3D air cushion layer

Due to their numerous individual polyester threads, 3D air cushion layers are incomparably breathable and extremely point-by-point elastic. This allows your baby to breathe more freely and sweat less.



4-hole high-tech hollow fibre

A hollow fibre is round and hollow inside. These fibres surround the body with a feather-light envelope which protects it from changes in temperature and promotes active air interchange.



Aloe vera

The natural extracts of the aloe vera plant can have a positive effect on sleep thanks to its skin-friendly properties. Aloe vera is hypoallergenic.



Antibacterial polyester

The antibacterial treatment destroys microbes/germs on contact and thus provides permanent anti-bacterial protection.



You can find more information on the individual mattress covers on page 7 - you can find the detailed material composition of the individual covers on www.traeumeland.com!

Cotton

Cotton is one of the most well-known and most widely-used natural materials. Cotton is breathable and highly durable. Therefore it is particularly suitable for use in a baby bed.



Cotton-satin / cotton-batiste

Fine-thread, silky fabric with a more or less glossy, structureless surface for high-quality textiles.



Certified organic cotton

KBA stands for controlled organic cultivation. This means that absolutely no artificial fertilisers, pesticides or defoliation agents are used.



Down & feathers

In contrast to feathers, down is spherical and does not have a visible quill. It is also lighter. Träumeland products have the highest quality class and do not originate from a live plucking.



Elastane

Elastane is an extremely stretchy and cuddly fibre which ensures high elasticity in the material.



EPS beads

Fine, plush, noiseless beads are the ideal filling material for nursing cushions due to their high adaptability and pressure distribution.



Down fibre beads

Down fibre beads consist of a polyester fibre, plush up beautifully and are therefore excellent for nursing cushions and cuddly nests.



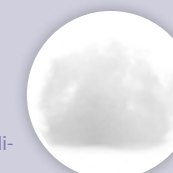
Kapok

Kapok is water-repellent and therefore prevents the development of mites.



Microfibre

Microfibre is a collective term for fibres, which are finer, for example, than cotton or silk. Microfibre fabrics are extraordinarily soft and retain shape well.



Polyester

Polyester is a particularly resistant, elastic fibre.



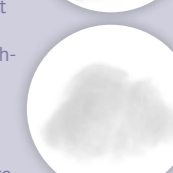
PU membrane

The membrane is water-repellent, but not air-permeable.



Quality hollow fibre

A hollow fibre is round and hollow inside. These fibres surround the body with a feather-light envelope which protects it from changes in temperature and promotes active air interchange.



TENCEL™ (Lyocell)

With TENCEL™, a new age of fibre technology has been introduced. TENCEL™ is a cellulose fibre and is obtained from wood in an environmentally-friendly process. It unites the advantages of many fibres: as fine as silk, as strong as polyester, as easy to care for as acrylic, as cool and pleasant to the touch as linen, as warm as wool; it also absorbs substantially more water vapour than cotton.



Thermo fleece

Consists of 100 % polyester and provides a soft, cuddly pad for changing mats.



Washable fleece

100 % polyester | Washable fleece is a washable hollow fibre that is ideally suited for babies with allergies.





Träumeland

Träumeland GmbH
Sportstraße 11, 4142 Hofkirchen, Österreich
info@traeumeland.com

Contact Austria and Switzerland:

Tel. 0043 7285 60 106

Contact Germany:

Tel. 0180 550 24 12



www.traeumeland.com



See all stores at
www.traeumeland.com

GOODBYE
SLEEPLESS
NIGHTS

DOWNLOAD
APP NOW!

